



# BGP Multihoming Techniques

**Philip Smith <pfs@cisco.com>**

**PacNOG 2 Workshop**

**Apia, Samoa**

**18-24 June 2006**

# BGP Multihoming Techniques

- **Why Multihome?**
- **Definition & Options**
- **Preparing the Network**
- **Basic Multihoming**
- **Service Provider Multihoming**
- **Using Communities**



# Why Multihome?

**It's all about redundancy, diversity & reliability**

# Why Multihome?

- **Redundancy**

**One connection to internet means the network is dependent on:**

**Local router (configuration, software, hardware)**

**WAN media (physical failure, carrier failure)**

**Upstream Service Provider (configuration, software, hardware)**

# Why Multihome?

- **Reliability**

**Business critical applications demand continuous availability**

**Lack of redundancy implies lack of reliability  
implies loss of revenue**

# Why Multihome?

- **Supplier Diversity**

**Many businesses demand supplier diversity as a matter of course**

**Internet connection from two or more suppliers**

**With two or more diverse WAN paths**

**With two or more exit points**

**With two or more international connections**

**Two of everything**

# Why Multihome?

- **Not really a reason, but oft quoted...**
- **Leverage:**
  - Playing one ISP off against the other for:**
    - Service Quality**
    - Service Offerings**
    - Availability**

# Why Multihome?

- **Summary:**

**Multihoming is easy to demand as requirement for any service provider or end-site network**

**But what does it really mean:**

**In real life?**

**For the network?**

**For the Internet?**

**And how do we do it?**



# BGP Multihoming Techniques

- **Why Multihome?**
- **Definition & Options**
- **Preparing the Network**
- **Basic Multihoming**
- **Service Provider Multihoming**
- **Using Communities**



# Multihoming: Definitions & Options

**What does it mean, what do we need, and how do we do it?**

# Multihoming Definition

- **More than one link external to the local network**
  - two or more links to the same ISP**
  - two or more links to different ISPs**
- **Usually **two** external facing routers**
  - one router gives link and provider redundancy only**

# AS Numbers

- **An Autonomous System Number is required by BGP**
- **Obtained from upstream ISP or Regional Registry (RIR)**  
**AfriNIC, APNIC, ARIN, LACNIC, RIPE NCC**
- **Necessary when you have links to more than one ISP or to an exchange point**
- **16 bit integer, ranging from 1 to 65534**  
**Zero and 65535 are reserved**  
**64512 through 65534 are called Private ASNs**

# Private-AS – Application

- **Applications**

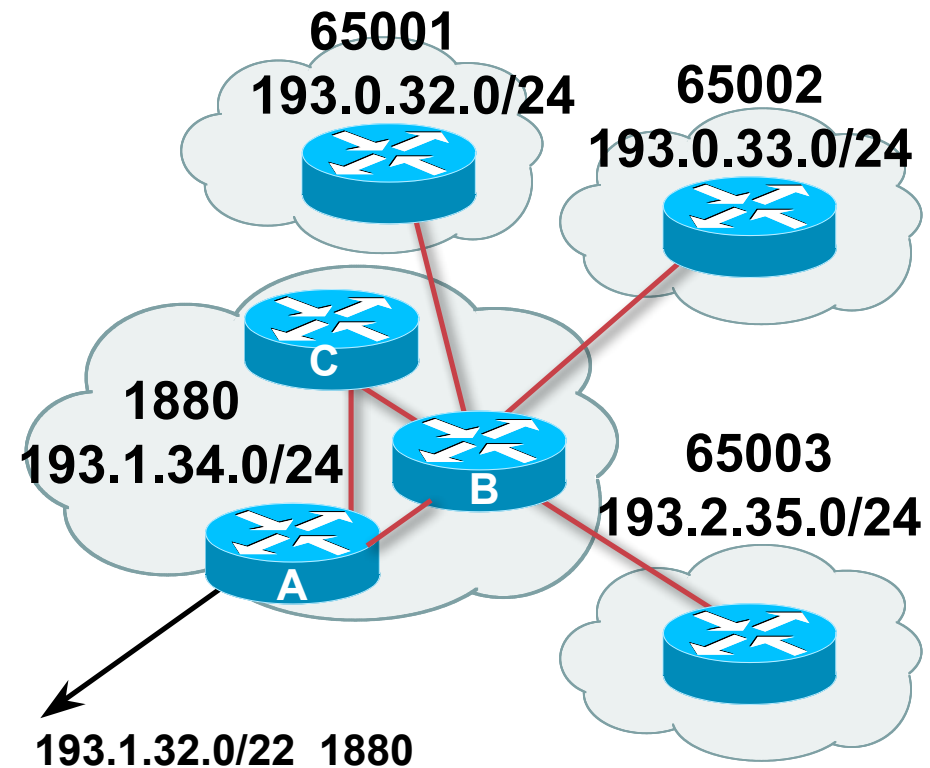
**An ISP with customers multihomed on their backbone (RFC2270)**

**-or-**

**A corporate network with several regions but connections to the Internet only in the core**

**-or-**

**Within a BGP Confederation**



# Private-AS – Removal

- **Private ASNs MUST be removed from all prefixes announced to the public Internet**

Include configuration to remove private ASNs in the eBGP template

- **As with RFC1918 address space, private ASNs are intended for internal use**

They should not be leaked to the public Internet

- **Cisco IOS**

**neighbor x.x.x.x remove-private-AS**

# Configuring Policy

- **Three BASIC Principles for IOS configuration examples throughout presentation:**
  - prefix-lists** to filter **prefixes**
  - filter-lists** to filter **ASNs**
  - route-maps** to apply **policy**
- **Route-maps can be used for filtering, but this is more “advanced” configuration**

# Policy Tools

- **Local preference**  
outbound traffic flows
- **Metric (MED)**  
inbound traffic flows (local scope)
- **AS-PATH prepend**  
inbound traffic flows (Internet scope)
- **Communities**  
specific inter-provider peering



# Originating Prefixes: Assumptions

- **MUST** announce assigned address block to Internet
- **MAY** also announce subprefixes – reachability is not guaranteed
- **Current RIR minimum allocation is /21**

**Several ISPs filter RIR blocks on this boundary**

**Several ISPs filter the rest of address space according to the IANA assignments**

**This activity is called “Net Police” by some**

# Originating Prefixes

- **Some ISPs publish their minimum allocation sizes per /8 address block**

**AfriNIC:**                [www.afrinic.net/docs/policies/afpol-v4200407-000.htm](http://www.afrinic.net/docs/policies/afpol-v4200407-000.htm)

**APNIC:**                [www.apnic.net/db/min-alloc.html](http://www.apnic.net/db/min-alloc.html)

**ARIN:**                 [www.arin.net/reference/ip\\_blocks.html](http://www.arin.net/reference/ip_blocks.html)

**LACNIC:**              [lacnic.net/en/registro/index.html](http://lacnic.net/en/registro/index.html)

**RIPE NCC:**            [www.ripe.net/ripe/docs/smallest-alloc-sizes.html](http://www.ripe.net/ripe/docs/smallest-alloc-sizes.html)

**Note that AfriNIC only publishes its current minimum allocation size, not the allocation size for its address blocks**

- **IANA publishes the address space it has assigned to end-sites and allocated to the RIRs:**

[www.iana.org/assignments/ipv4-address-space](http://www.iana.org/assignments/ipv4-address-space)

- **Several ISPs use this published information to filter prefixes on:**

**What should be routed (from IANA)**

**The minimum allocation size from the RIRs**

# “Net Police” prefix list issues

- meant to “punish” ISPs who pollute the routing table with specifics rather than announcing aggregates
- impacts legitimate multihoming especially at the Internet’s edge
- impacts regions where domestic backbone is unavailable or costs \$\$\$ compared with international bandwidth
- hard to maintain – requires updating when RIRs start allocating from new address blocks
- **don’t do it unless consequences understood and you are prepared to keep the list current**

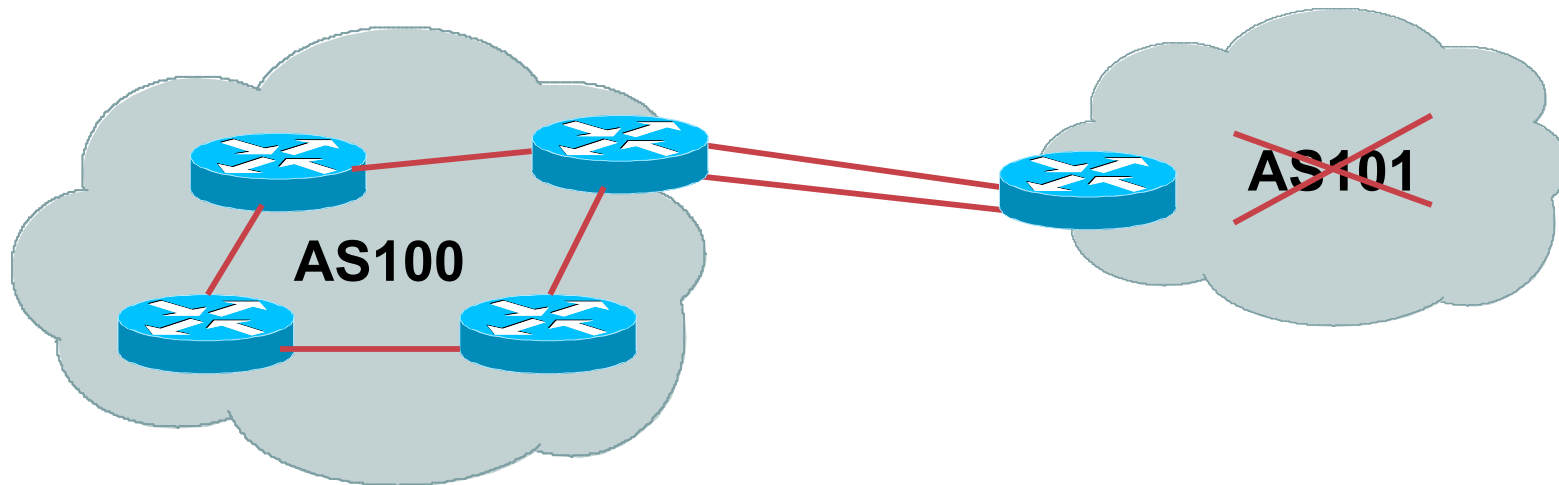
**Consider using the Project Cymru bogon BGP feed**

**<http://www.cymru.com/BGP/bogon-rs.html>**

# Multihoming Scenarios

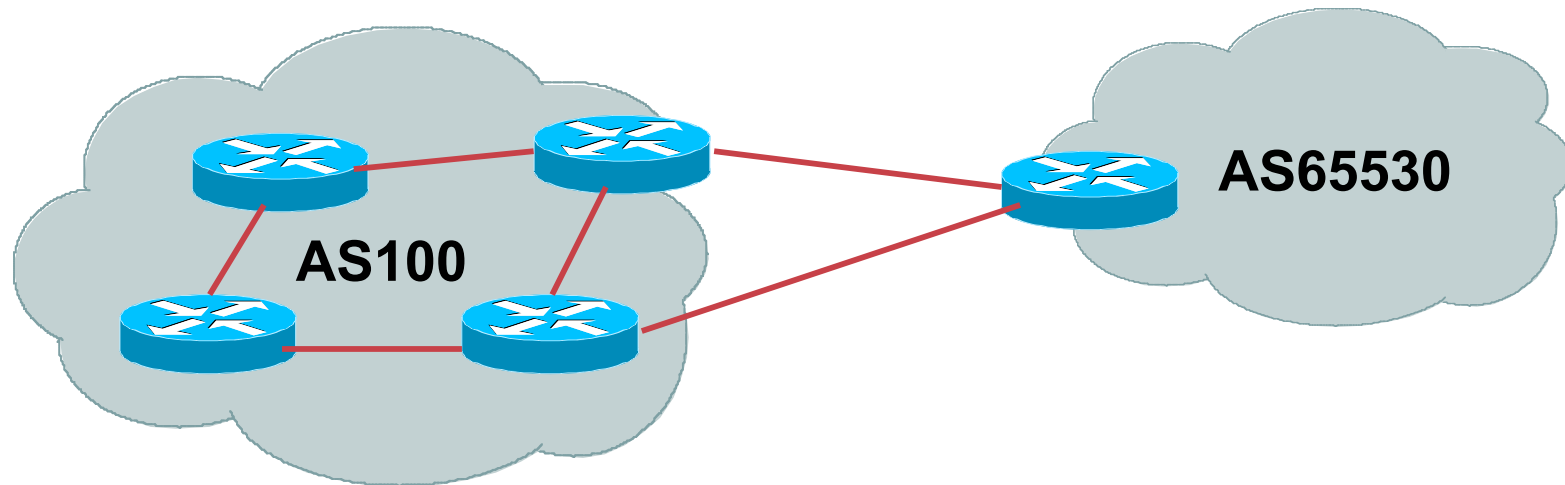
- **Stub network**
- **Multi-homed stub network**
- **Multi-homed network**
- **Load-balancing**

# Stub Network



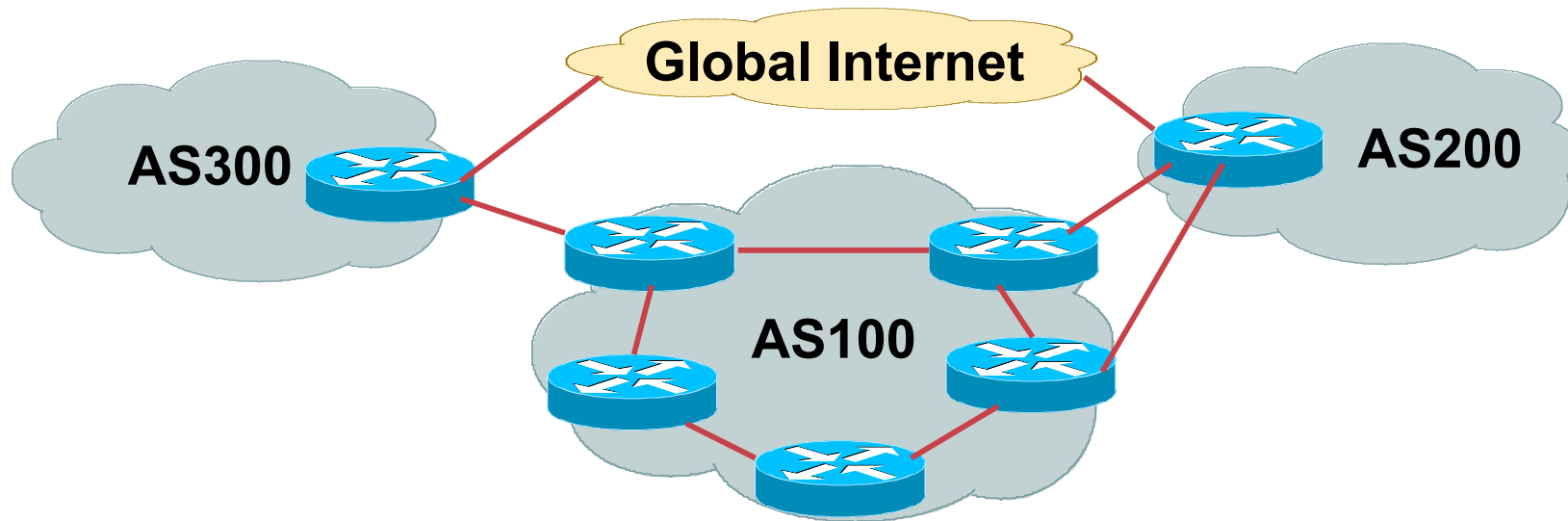
- **No need for BGP**
- **Point static default to upstream ISP**
- **Router will load share on the two parallel circuits**
- **Upstream ISP advertises stub network**
- **Policy confined within upstream ISP's policy**

# Multi-homed Stub Network



- **Use BGP (not IGP or static) to loadshare**
- **Use private AS (ASN > 64511)**
- **Upstream ISP advertises stub network**
- **Policy confined within upstream ISP's policy**

# Multi-Homed Network



- **Many situations possible**
  - multiple sessions to same ISP
  - secondary for backup only
  - load-share between primary and secondary
  - selectively use different ISPs

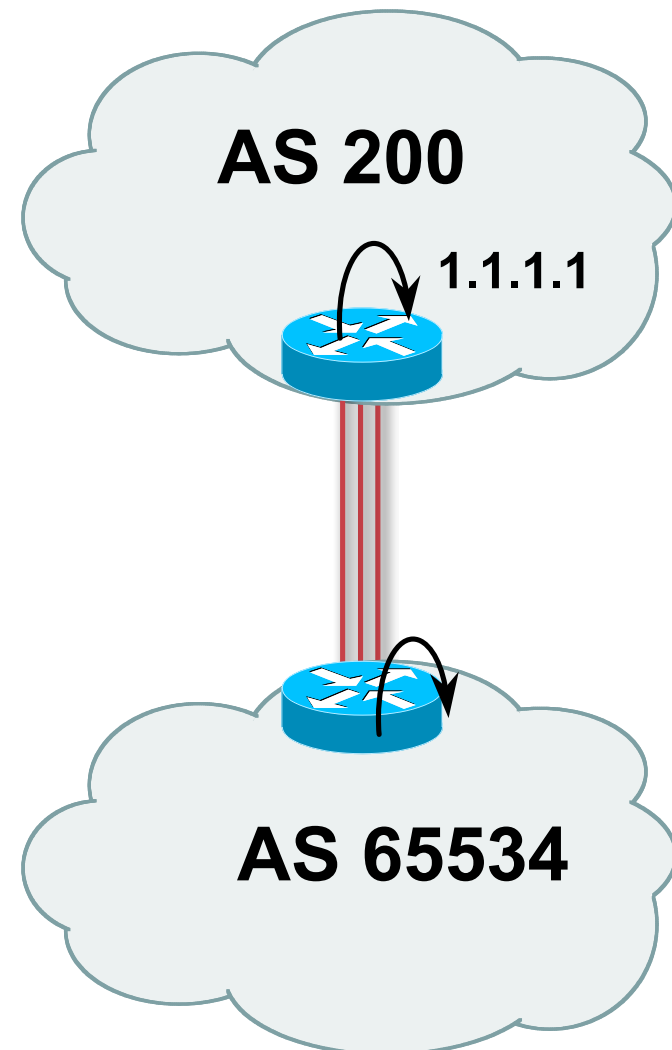
# Multiple Sessions to an ISP

## – Example One

- **Use eBGP multihop**
  - eBGP to loopback addresses
  - eBGP prefixes learned with loopback address as next hop

- **Cisco IOS**

```
router bgp 65534
  neighbor 1.1.1.1 remote-as 200
  neighbor 1.1.1.1 ebgp-multihop 2
!
ip route 1.1.1.1 255.255.255.255 serial 1/0
ip route 1.1.1.1 255.255.255.255 serial 1/1
ip route 1.1.1.1 255.255.255.255 serial 1/2
```





# Multiple Sessions to an ISP – Example One

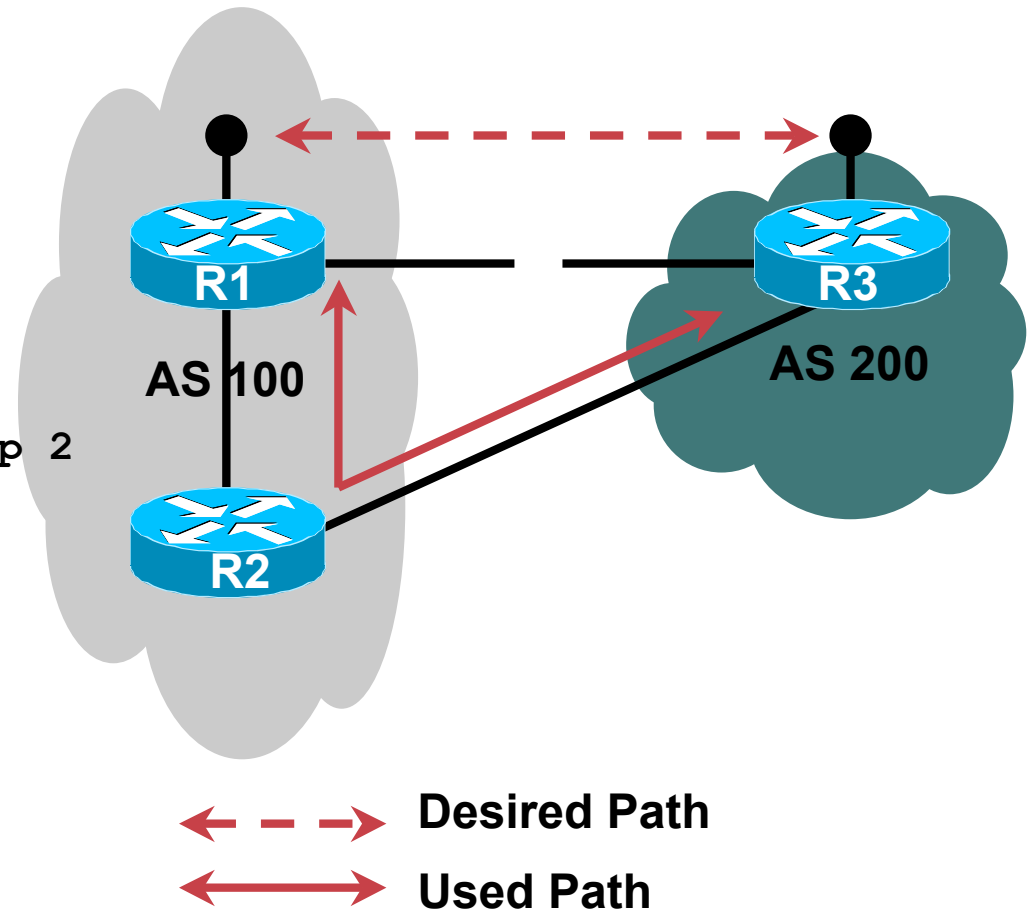
- **One eBGP-multihop gotcha:**

**R1 and R3 are eBGP peers that are loopback peering**

**Configured with:**

```
neighbor x.x.x.x ebgp-multihop 2
```

**If the R1 to R3 link goes down the session could establish via R2**



# Multiple Sessions to an ISP

## – Example One

- **Try and avoid use of ebgp-multihop unless:**  
It's absolutely necessary **–or–**  
Loadsharing across multiple links
- **Many ISPs discourage its use, for example:**

**We will run eBGP multihop, but do not support it as a standard offering because customers generally have a hard time managing it due to:**

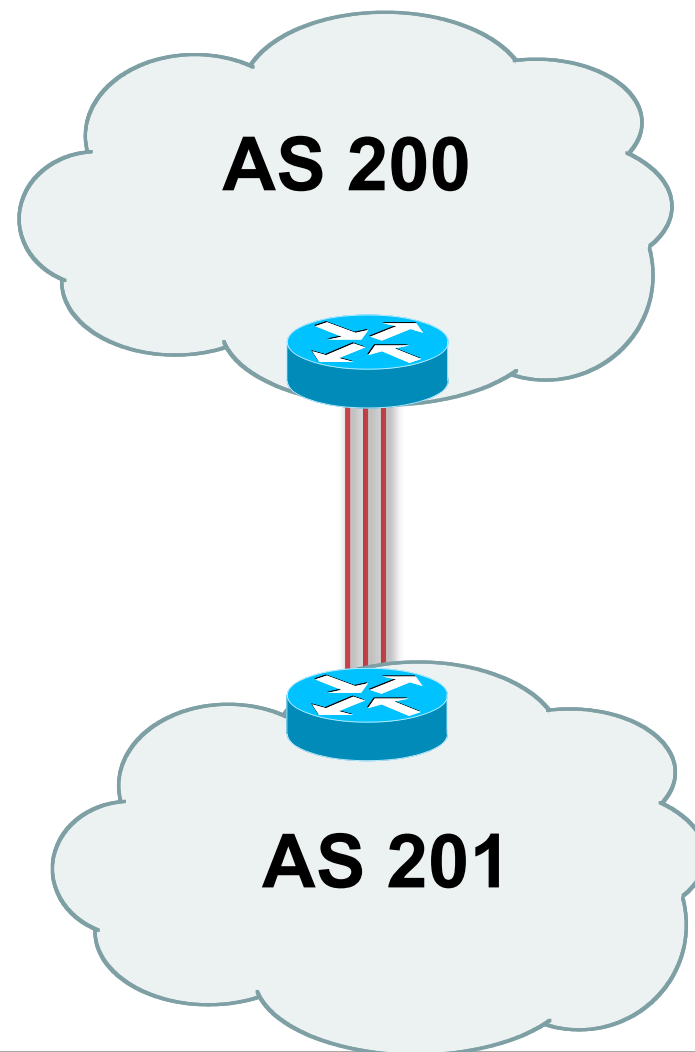
- **routing loops**
- **failure to realise that BGP session stability problems are usually due connectivity problems between their CPE and their BGP speaker**

# Multiple Sessions to an ISP

## – Example Two

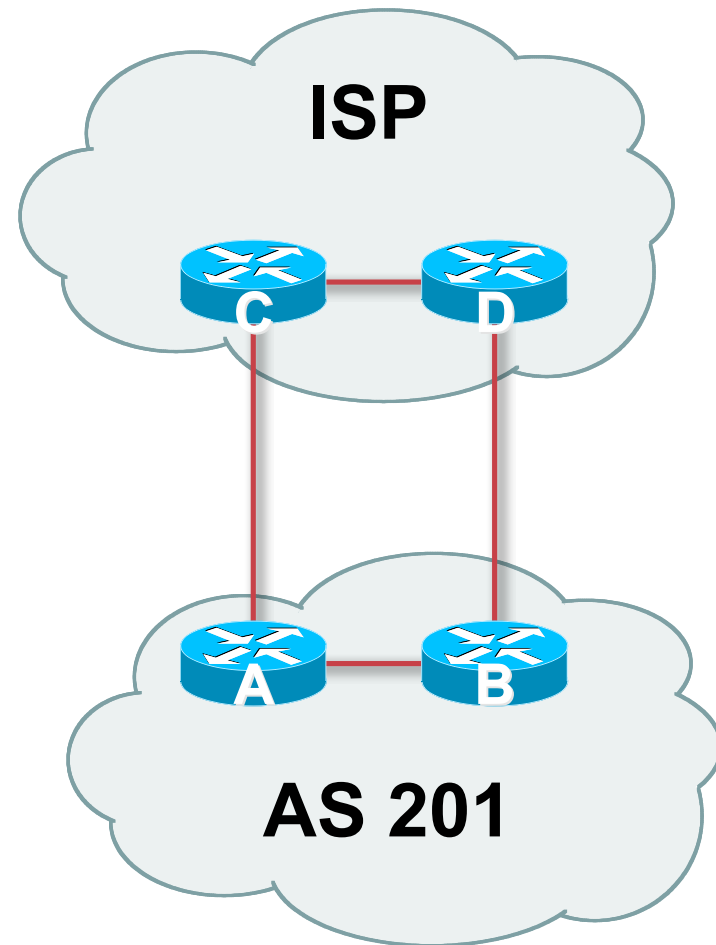
- **BGP multi-path**
- **Limit to number of parallel paths depending on implementation**
- **For this example, three BGP sessions required**
- **Cisco IOS Configuration**

```
router bgp 201
  neighbor 1.1.2.1 remote-as 200
  neighbor 1.1.2.5 remote-as 200
  neighbor 1.1.2.9 remote-as 200
  maximum-paths 3
```



# Multiple Sessions to an ISP

- **Simplest scheme is to use defaults**
- **Learn/advertise prefixes for better control**
- **Planning and some work required to achieve loadsharing**
  - Point default towards one ISP**
  - Learn selected prefixes from second ISP**
  - Modify the number of prefixes learnt to achieve acceptable load sharing**
- **No magic solution**



# BGP Multihoming Techniques

- **Why Multihome?**
- **Definition & Options**
- **Preparing the Network**
- **Basic Multihoming**
- **Service Provider Multihoming**
- **Using Communities**



# Preparing the Network

**Putting our own house in order first...**

# Preparing the Network

- **We will deploy BGP across the network before we try and multihome**
- **BGP will be used therefore an ASN is required**
- **If multihoming to different ISPs, public ASN needed:**

**Either go to upstream ISP who is a registry member, or**

**Apply to the RIR yourself for a one off assignment, or**

**Ask an ISP who is a registry member, or**

**Join the RIR and get your own IP address allocation too (this option strongly recommended)!**

# Preparing the Network

- **The network is not running any BGP at the moment**  
**single statically routed connection to upstream ISP**
- **The network is not running any IGP at all**  
**Static default and routes through the network to do “routing”**



# Preparing the Network IGP

- **Decide on IGP: OSPF or ISIS 😊**
- **Assign loopback interfaces and /32 addresses to each router which will run the IGP**

Loopback is used for OSPF and BGP router id anchor  
Used for iBGP and route origination

- **Deploy IGP (e.g. OSPF)**

IGP can be deployed with NO IMPACT on the existing static routing

OSPF distance is 110, static distance is 1

**Smallest distance wins**

# Preparing the Network

## IGP (cont)

- **Be prudent deploying IGP – keep the Link State Database Lean!**

**Router loopbacks go in IGP**

**WAN point to point links go in IGP**

**(In fact, any link where IGP dynamic routing will be run should go into IGP)**

**Summarise on area/level boundaries (if possible) – i.e. think about your IGP address plan**

# Preparing the Network

## IGP (cont)

- **Routes which don't go into the IGP include:**
  - Dynamic assignment pools (DSL/Cable/Dial)**
  - Customer point to point link addressing**  
(using next-hop-self in iBGP ensures that these do NOT need to be in IGP)
  - Static/Hosting LANs**
  - Customer assigned address space**
  - Anything else not listed in the previous slide**

# Preparing the Network

## Introduce OSPF

```
interface loopback 0
 ip address 121.10.255.1 255.255.255.255
!
interface Ethernet 0/0
 ip address 121.10.2.1 255.255.255.240
!
interface serial 0/0
 ip address 121.10.0.1 255.255.255.252
!
interface serial 0/1
 ip address 121.10.0.5 255.255.255.252
!
router ospf 100
 network 121.10.255.1 0.0.0.0 area 0
 network 121.10.2.0 0.0.0.15 area 0
 passive-interface default
 no passive-interface Ethernet 0/0
!
ip route 121.10.24.0 255.255.252.0 serial 0/0
ip route 121.10.28.0 255.255.254.0 serial 0/1
```

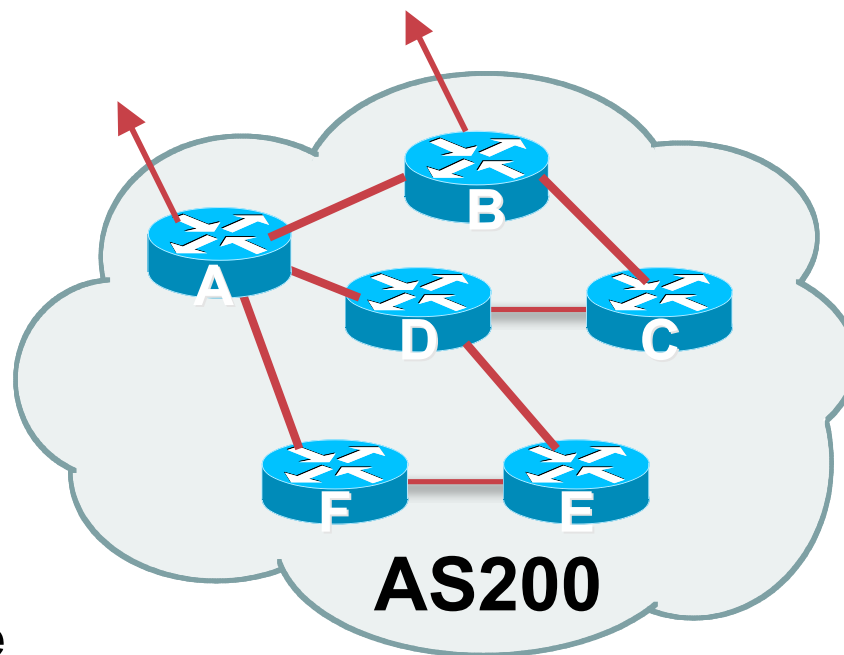
**Add loopback  
configuration**

**Customer  
connections**

# Preparing the Network

## iBGP

- Second step is to configure the local network to use iBGP
- iBGP can run on
  - all routers, or
  - a subset of routers, or
  - just on the upstream edge
- *iBGP must run on all routers which are in the transit path between external connections*



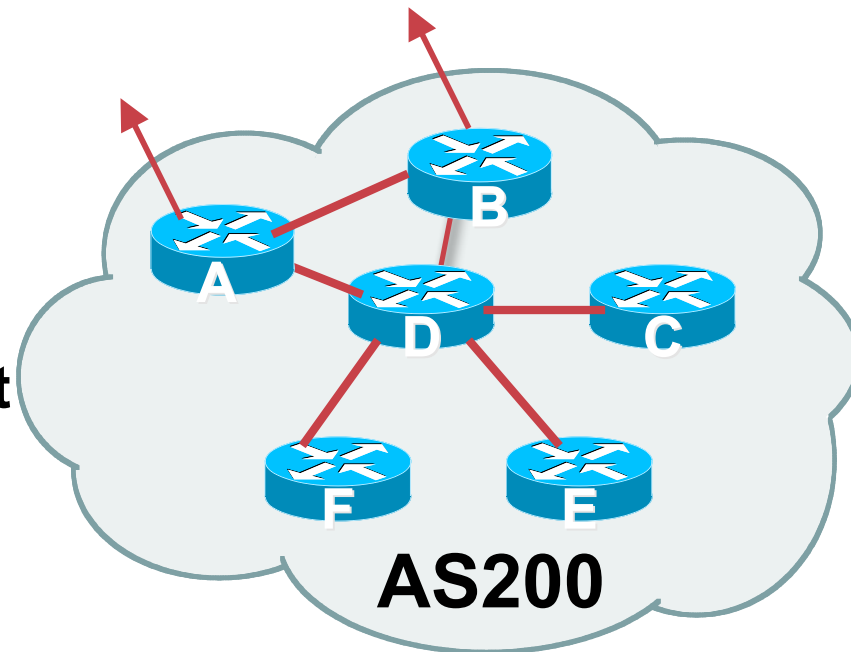
# Preparing the Network iBGP (Transit Path)

- *iBGP must run on all routers which are in the transit path between external connections*
- **Routers C, E and F are not in the transit path**

Static routes or IGP will suffice

- **Router D is in the transit path**

Will need to be in iBGP mesh, otherwise routing loops will result



# Preparing the Network Layers

- **Typical SP networks have three layers:**
  - Core – the backbone, usually the transit path**
  - Distribution – the middle, PoP aggregation layer**
  - Aggregation – the edge, the devices connecting customers**

# Preparing the Network Aggregation Layer

- **iBGP is optional**

**Many ISPs run iBGP here, either partial routing (more common) or full routing (less common)**

**Full routing is not needed unless customers want full table**

**Partial routing is cheaper/easier, might usually consist of internal prefixes and, optionally, external prefixes to aid external load balancing**

**Communities and peer-groups make this administratively easy**

- **Many aggregation devices can't run iBGP**

**Static routes from distribution devices for address pools**

**IGP for best exit**



# Preparing the Network Distribution Layer

- **Usually runs iBGP**
  - Partial or full routing (as with aggregation layer)**
- **But does not have to run iBGP**
  - IGP is then used to carry customer prefixes (does not scale)**
  - IGP is used to determine nearest exit**
- **Networks which plan to grow large should deploy iBGP from day one**
  - Migration at a later date is extra work**
  - No extra overhead in deploying iBGP, indeed IGP benefits**

# Preparing the Network Core Layer

- **Core of network is usually the transit path**
- **iBGP necessary between core devices**

**Full routes or partial routes:**

**Transit ISPs carry full routes in core**

**Edge ISPs carry partial routes only**

- **Core layer includes AS border routers**

# Preparing the Network

## iBGP Implementation

### Decide on:

- **Best iBGP policy**

**Will it be full routes everywhere, or partial, or some mix?**

- **iBGP scaling technique**

**Community policy?**

**Route-reflectors?**

**Techniques such as peer groups and peer templates?**

# Preparing the Network

## iBGP Implementation

- **Then deploy iBGP:**

**Step 1: Introduce iBGP mesh on chosen routers**

make sure that iBGP distance is greater than IGP distance (it usually is)

**Step 2: Install “customer” prefixes into iBGP**

**Check!** Does the network still work?

**Step 3: Carefully remove the static routing for the prefixes now in IGP and iBGP**

**Check!** Does the network still work?

**Step 4: Deployment of eBGP follows**

# Preparing the Network

## iBGP Implementation

### *Install “customer” prefixes into iBGP?*

- **Customer assigned address space**
  - Network statement/static route combination**
  - Use unique community to identify customer assignments**
- **Customer facing point-to-point links**
  - Redistribute connected through filters which only permit point-to-point link addresses to enter iBGP**
  - Use a unique community to identify point-to-point link addresses (these are only required for your monitoring system)**
- **Dynamic assignment pools & local LANs**
  - Simple network statement will do this**
  - Use unique community to identify these networks**

# Preparing the Network

## iBGP Implementation

### *Carefully remove static routes?*

- **Work on one router at a time:**
  - Check that static route for a particular destination is also learned either by IGP or by iBGP**
  - If so, remove it**
  - If not, establish why and fix the problem**
  - (Remember to look in the RIB, not the FIB!)**
- **Then the next router, until the whole PoP is done**
- **Then the next PoP, and so on until the network is now dependent on the IGP and iBGP you have deployed**

# Preparing the Network Completion

- **Previous steps are NOT flag day steps**

**Each can be carried out during different maintenance periods, for example:**

**Step One on Week One**

**Step Two on Week Two**

**Step Three on Week Three**

**And so on**

**And with proper planning will have NO customer visible impact at all**

# Preparing the Network Configuration – Steps 1 & 2

!

```
router bgp 100
 redistribute connected subnets route-map point-to-point
 neighbor 121.10.1.2 remote-as 100
 neighbor 121.10.1.2 next-hop-self
 ...
 network 121.10.24.0 mask 255.255.252.0
 network 121.10.28.0 mask 255.255.254.0
 distance bgp 200 200 200
```

!


```
ip route 121.10.24.0 255.255.252.0 serial 0/0
ip route 121.10.28.0 255.255.254.0 serial 0/1
```

!

```
route-map point-to-point permit 5
 match ip address 1
 set community 100:1
```

!

```
access-list 1 permit 121.10.0.0 0.0.255.255
```



**Add BGP and related  
configuration in red**



# Preparing the Network Configuration – Step 3

```
router ospf 100
  network 121.10.255.1 0.0.0.0 area 0
  network 121.10.2.0 0.0.0.15 area 0
  passive-interface default
  no passive-interface ethernet 0/0
!
router bgp 100
  redistribute connected route-map point-to-point
  neighbor 121.10.1.2 remote-as 100
  neighbor 121.10.1.2 next-hop-self
  ...
  network 121.10.24.0 mask 255.255.252.0
  network 121.10.28.0 mask 255.255.254.0
  distance bgp 200 200 200    ! BGP distance modified from default
!
ip route 121.10.24.0 255.255.252.0 serial 0/0
ip route 121.10.28.0 255.255.254.0 serial 0/1
!
...etc...
```

# Preparing the Network Configuration Summary

- **IGP essential networks are in IGP**
- **Customer networks are now in iBGP**  
**iBGP deployed over the backbone**  
**Full or Partial or Upstream Edge only**
- **BGP distance is greater than any IGP**
- **Now ready to deploy eBGP**

# BGP Multihoming Techniques

- **Why Multihome?**
- **Definition & Options**
- **Preparing the Network**
- **Basic Multihoming**
- **“BGP Traffic Engineering”**
- **Using Communities**



# Basic Multihoming

**Learning to walk before we try running**

# Basic Multihoming

- **No frills multihoming**
- **Will look at two cases:**
  - Multihoming with the same ISP**
  - Multihoming to different ISPs**
- **Will keep the examples easy**
  - Understanding easy concepts will make the more complex scenarios easier to comprehend**
  - All assume that the site multihoming has a /19 address block**

# Basic Multihoming

- **This type is most commonplace at the edge of the Internet**

**Networks here are usually concerned with inbound traffic flows**

**Outbound traffic flows being “nearest exit” is usually sufficient**

- **Can apply to the leaf ISP as well as Enterprise networks**



# Basic Multihoming

## Multihoming to the Same ISP

# Basic Multihoming:

## Multihoming to the same ISP

- **Use BGP for this type of multihoming**
  - use a private AS (ASN > 64511)**
  - There is no need or justification for a public ASN**
  - Making the nets of the end-site visible gives no useful information to the Internet**
- **Upstream ISP proxy aggregates**
  - in other words, announces only your address block to the Internet from their AS (as would be done if you had one statically routed connection)**





# Two links to the same ISP

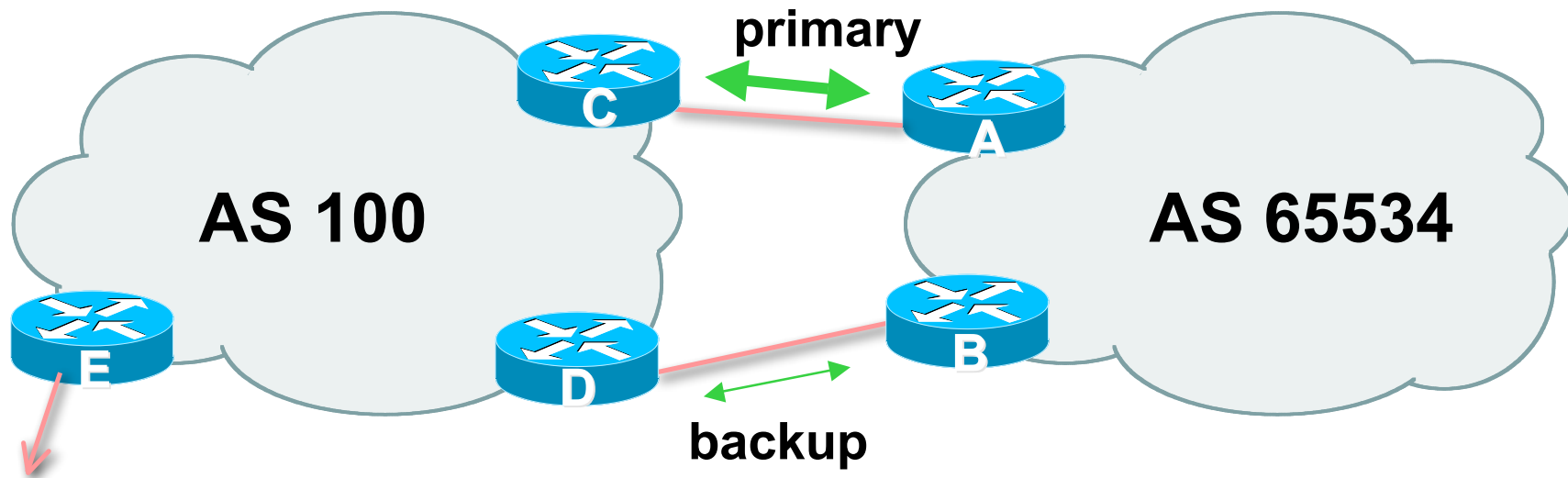
**One link primary, the other link backup only**

## Two links to the same ISP (one as backup only)

- **Applies when end-site has bought a large primary WAN link to their upstream a small secondary WAN link as the backup**

**For example, primary path might be an E1,  
backup might be 64kbps**

## Two links to the same ISP (one as backup only)



- **Border router E in AS100 removes private AS and any customer subprefixes from Internet announcement**

## Two links to the same ISP (one as backup only)

- **Announce /19 aggregate on each link**

primary link:

Outbound – announce /19 unaltered

Inbound – receive default route

backup link:

Outbound – announce /19 with increased metric

Inbound – received default, and reduce local preference

- **When one link fails, the announcement of the /19 aggregate via the other link ensures continued connectivity**

# Two links to the same ISP (one as backup only)

- **Router A Configuration**

```
router bgp 65534
  network 121.10.0.0 mask 255.255.224.0
  neighbor 122.102.10.2 remote-as 100
  neighbor 122.102.10.2 description RouterC
  neighbor 122.102.10.2 prefix-list aggregate out
  neighbor 122.102.10.2 prefix-list default in
!
ip prefix-list aggregate permit 121.10.0.0/19
ip prefix-list default permit 0.0.0.0/0
!
```

# Two links to the same ISP (one as backup only)

- **Router B Configuration**

```
router bgp 65534
  network 121.10.0.0 mask 255.255.224.0
  neighbor 122.102.10.6 remote-as 100
  neighbor 122.102.10.6 description RouterD
  neighbor 122.102.10.6 prefix-list aggregate out
  neighbor 122.102.10.6 route-map routerD-out out
  neighbor 122.102.10.6 prefix-list default in
  neighbor 122.102.10.6 route-map routerD-in in
!
```

..next slide

# Two links to the same ISP (one as backup only)

```
ip prefix-list aggregate permit 121.10.0.0/19
ip prefix-list default permit 0.0.0.0/0
!
route-map routerD-out permit 10
  match ip address prefix-list aggregate
  set metric 10
route-map routerD-out permit 20
!
route-map routerD-in permit 10
  set local-preference 90
!
```

# Two links to the same ISP (one as backup only)

- **Router C Configuration (main link)**

```
router bgp 100
  neighbor 122.102.10.1 remote-as 65534
  neighbor 122.102.10.1 default-originate
  neighbor 122.102.10.1 prefix-list Customer in
  neighbor 122.102.10.1 prefix-list default out
!
ip prefix-list Customer permit 121.10.0.0/19
ip prefix-list default permit 0.0.0.0/0
```



# Two links to the same ISP (one as backup only)

- **Router D Configuration (backup link)**

```
router bgp 100
```

```
neighbor 122.102.10.5 remote-as 65534
```

```
neighbor 122.102.10.5 default-originate
```

```
neighbor 122.102.10.5 prefix-list Customer in
```

```
neighbor 122.102.10.5 prefix-list default out
```

```
!
```

```
ip prefix-list Customer permit 121.10.0.0/19
```

```
ip prefix-list default permit 0.0.0.0/0
```

# Two links to the same ISP (one as backup only)

- **Router E Configuration**

```
router bgp 100
```

```
neighbor 122.102.10.17 remote-as 110
```

```
neighbor 122.102.10.17 remove-private-AS
```

```
neighbor 122.102.10.17 prefix-list Customer out
```

```
!
```

```
ip prefix-list Customer permit 121.10.0.0/19
```

- **Router E removes the private AS and customer's subprefixes from external announcements**
- **Private AS still visible inside AS100**



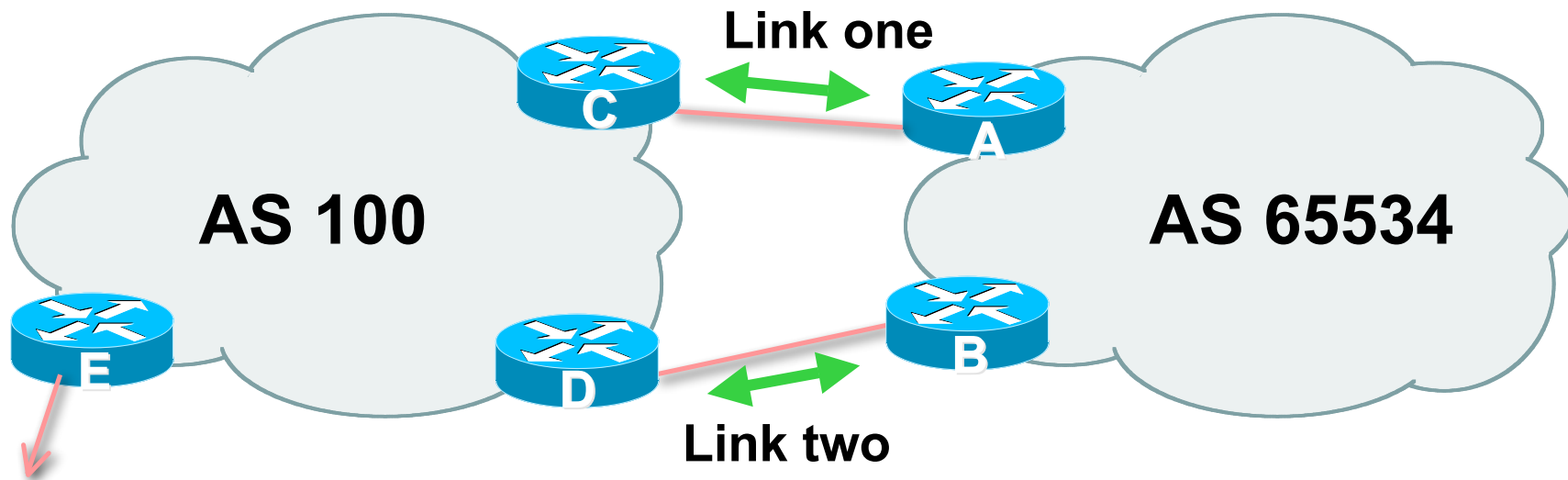
# Two links to the same ISP

**With Loadsharing**

# Loadsharing to the same ISP

- **More common case**
- **End sites tend not to buy circuits and leave them idle, only used for backup as in previous example**
- **This example assumes equal capacity circuits**  
**Unequal capacity circuits requires more refinement – see later**

# Loadsharing to the same ISP



- **Border router E in AS100 removes private AS and any customer subprefixes from Internet announcement**

# Loadsharing to the same ISP

- **Announce /19 aggregate on each link**
- **Split /19 and announce as two /20s, one on each link**
  - basic inbound loadsharing
  - assumes equal circuit capacity and even spread of traffic across address block
- **Vary the split until “perfect” loadsharing achieved**
- **Accept the default from upstream**
  - basic outbound loadsharing by nearest exit
  - okay in first approx as most ISP and end-site traffic is inbound

# Loadsharing to the same ISP

- **Router A Configuration**

```
router bgp 65534
  network 121.10.0.0 mask 255.255.224.0
  network 121.10.0.0 mask 255.255.240.0
  neighbor 122.102.10.2 remote-as 100
  neighbor 122.102.10.2 prefix-list routerC out
  neighbor 122.102.10.2 prefix-list default in
!
ip prefix-list default permit 0.0.0.0/0
ip prefix-list routerC permit 121.10.0.0/20
ip prefix-list routerC permit 121.10.0.0/19
!
ip route 121.10.0.0 255.255.240.0 null0
ip route 121.10.0.0 255.255.224.0 null0
```

**Router B configuration is similar but with the other /20**

# Loadsharing to the same ISP

- **Router C Configuration**

```
router bgp 100
  neighbor 122.102.10.1 remote-as 65534
  neighbor 122.102.10.1 default-originate
  neighbor 122.102.10.1 prefix-list Customer in
  neighbor 122.102.10.1 prefix-list default out
!
ip prefix-list Customer permit 121.10.0.0/19 le 20
ip prefix-list default permit 0.0.0.0/0
```

- **Router C only allows in /19 and /20 prefixes from customer block**
- **Router D configuration is identical**



# Loadsharing to the same ISP

- **Loadsharing configuration is only on customer router**
- **Upstream ISP has to**
  - remove customer subprefixes from external announcements**
  - remove private AS from external announcements**
- **Could also use BGP communities**



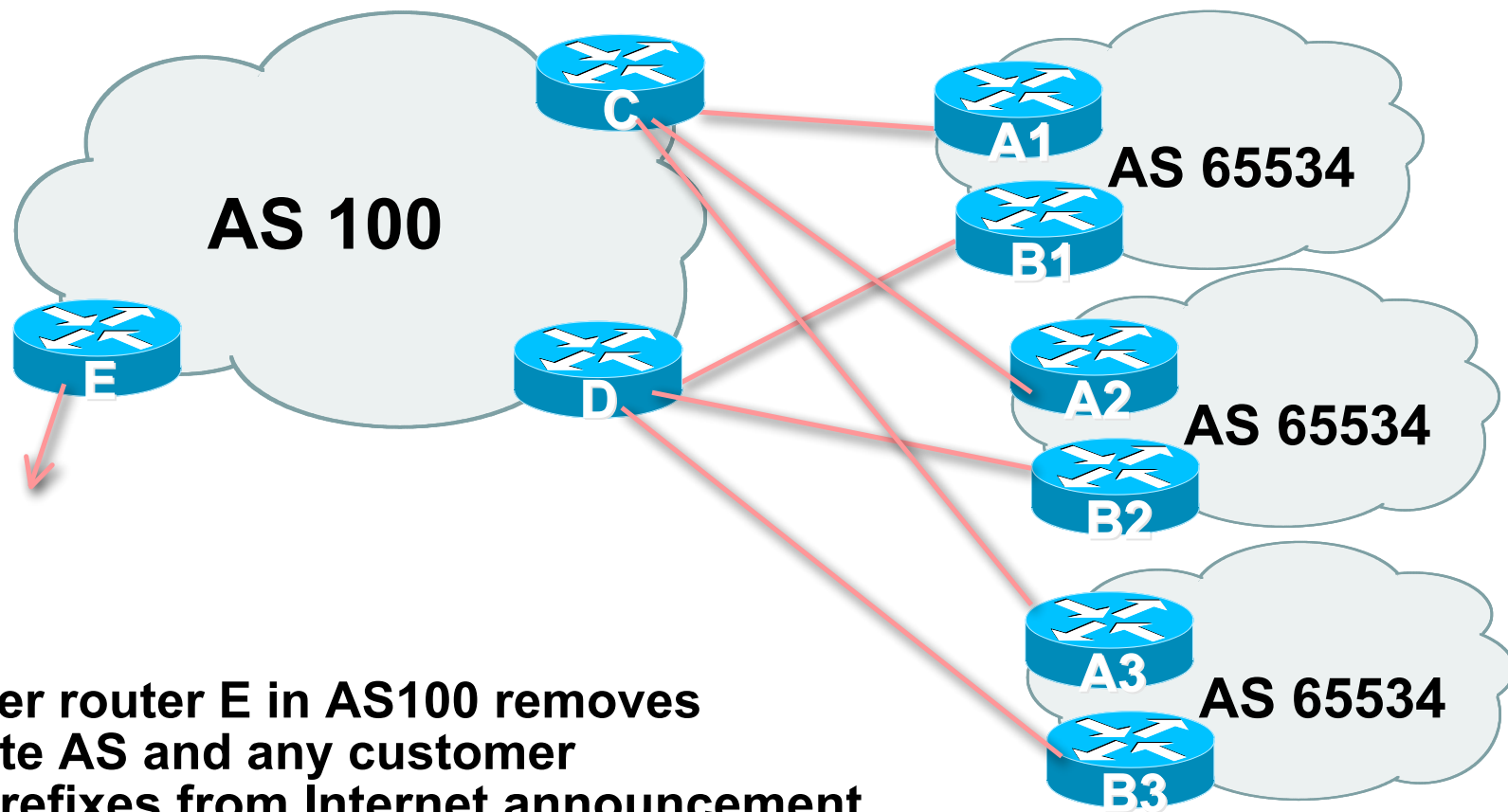
# Two links to the same ISP

**Multiple Dualhomed Customers (RFC2270)**

# Multiple Dualhomed Customers (RFC2270)

- **Unusual for an ISP just to have one dualhomed customer**  
**Valid/valuable service offering for an ISP with multiple PoPs**  
**Better for ISP than having customer multihome with another provider!**
- **Look at scaling the configuration**  
**⇒ Simplifying the configuration**  
**Using templates, peer-groups, etc**  
**Every customer has the same configuration (basically)**

# Multiple Dualhomed Customers (RFC2270)



- **Border router E in AS100 removes private AS and any customer subprefixes from Internet announcement**

# Multiple Dualhomed Customers

- **Customer announcements as per previous example**
- **Use the *same* private AS for each customer**
  - documented in RFC2270**
  - address space is not overlapping**
  - each customer hears default only**
- **Router *A<sub>n</sub>* and *B<sub>n</sub>* configuration same as Router A and B previously**

# Multiple Dualhomed Customers

- **Router A1 Configuration**

```
router bgp 65534
  network 121.10.0.0 mask 255.255.224.0
  network 121.10.0.0 mask 255.255.240.0
  neighbor 122.102.10.2 remote-as 100
  neighbor 122.102.10.2 prefix-list routerC out
  neighbor 122.102.10.2 prefix-list default in
!
ip prefix-list default permit 0.0.0.0/0
ip prefix-list routerC permit 121.10.0.0/20
ip prefix-list routerC permit 121.10.0.0/19
!
ip route 121.10.0.0 255.255.240.0 null0
ip route 121.10.0.0 255.255.224.0 null0
```

**Router B1 configuration is similar but for the other /20**

# Multiple Dualhomed Customers

- **Router C Configuration**

```
router bgp 100
```

```
neighbor bgp-customers peer-group
```

```
neighbor bgp-customers remote-as 65534
```

```
neighbor bgp-customers default-originate
```

```
neighbor bgp-customers prefix-list default out
```

```
neighbor 122.102.10.1 peer-group bgp-customers
```

```
neighbor 122.102.10.1 description Customer One
```

```
neighbor 122.102.10.1 prefix-list Customer1 in
```

```
neighbor 122.102.10.9 peer-group bgp-customers
```

```
neighbor 122.102.10.9 description Customer Two
```

```
neighbor 122.102.10.9 prefix-list Customer2 in
```

# Multiple Dualhomed Customers

```
neighbor 122.102.10.17 peer-group bgp-customers
neighbor 122.102.10.17 description Customer Three
neighbor 122.102.10.17 prefix-list Customer3 in
!
ip prefix-list Customer1 permit 121.10.0.0/19 le 20
ip prefix-list Customer2 permit 121.16.64.0/19 le 20
ip prefix-list Customer3 permit 121.14.192.0/19 le 20
ip prefix-list default permit 0.0.0.0/0
```

- Router C only allows in /19 and /20 prefixes from customer block
- Router D configuration is almost identical



# Multiple Dualhomed Customers

- **Router E Configuration**

assumes customer address space is not part of upstream's address block

```
router bgp 100
  neighbor 122.102.10.17 remote-as 110
  neighbor 122.102.10.17 remove-private-AS
  neighbor 122.102.10.17 prefix-list Customers out
!
ip prefix-list Customers permit 121.10.0.0/19
ip prefix-list Customers permit 121.16.64.0/19
ip prefix-list Customers permit 121.14.192.0/19
```

- **Private AS still visible inside AS100**

# Multiple Dualhomed Customers

- If customers' prefixes come from ISP's address block  
do **NOT** announce them to the Internet  
announce **ISP aggregate only**

- Router E configuration:

```
router bgp 100
  neighbor 122.102.10.17 remote-as 110
  neighbor 122.102.10.17 prefix-list my-aggregate out
!
ip prefix-list my-aggregate permit 121.8.0.0/13
```



# Basic Multihoming

**Multihoming to different ISPs**

# Two links to different ISPs

- **Use a Public AS**

Or use private AS if agreed with the other ISP

But some people don't like the “inconsistent-AS” which results from use of a private-AS

- **Address space comes from**

both upstreams **or**

Regional Internet Registry

- **Configuration concepts very similar**

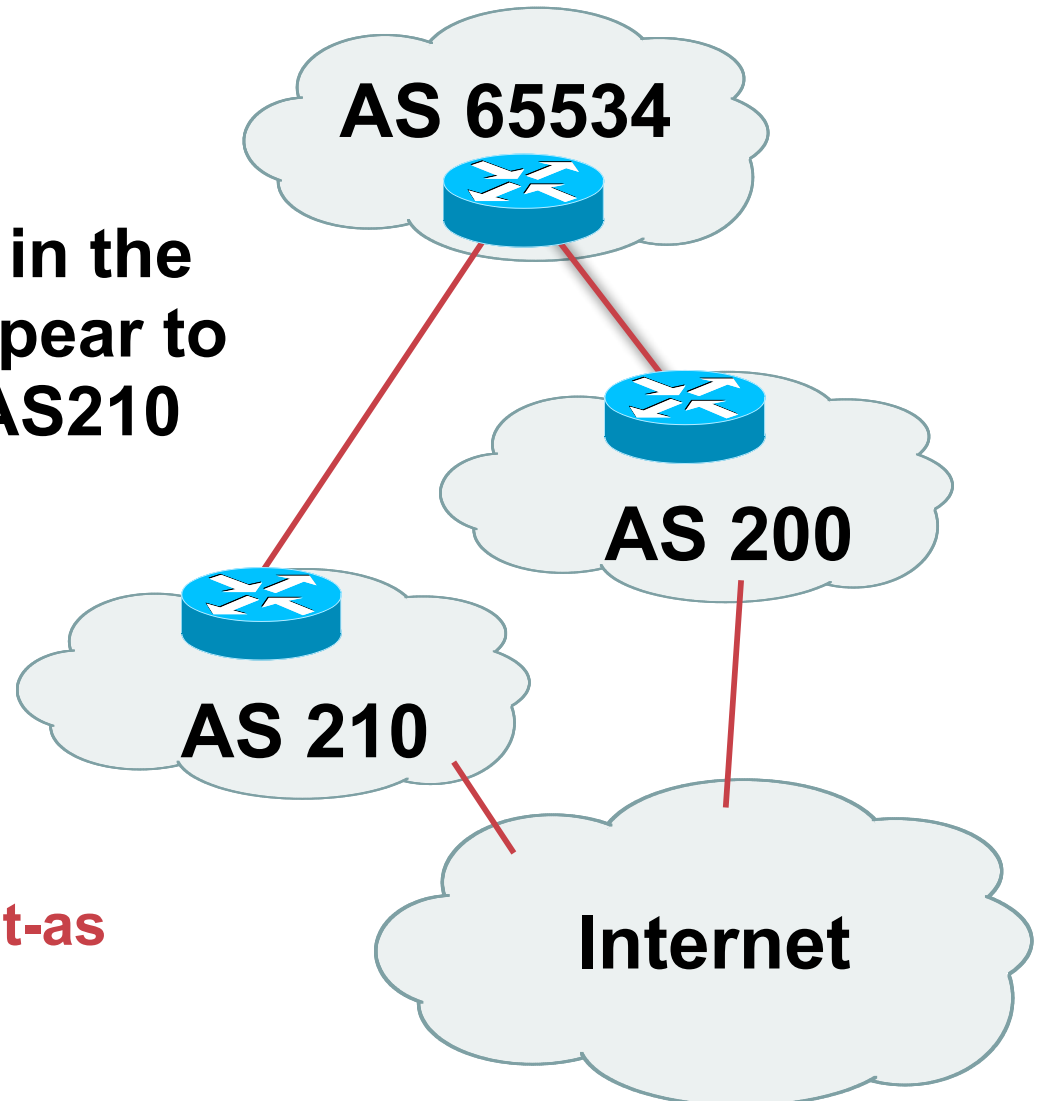
# Inconsistent-AS?

- Viewing the prefixes originated by AS65534 in the Internet shows they appear to be originated by both AS210 and AS200

This is NOT bad

Nor is it illegal

- Cisco IOS command is  
**show ip bgp inconsistent-as**





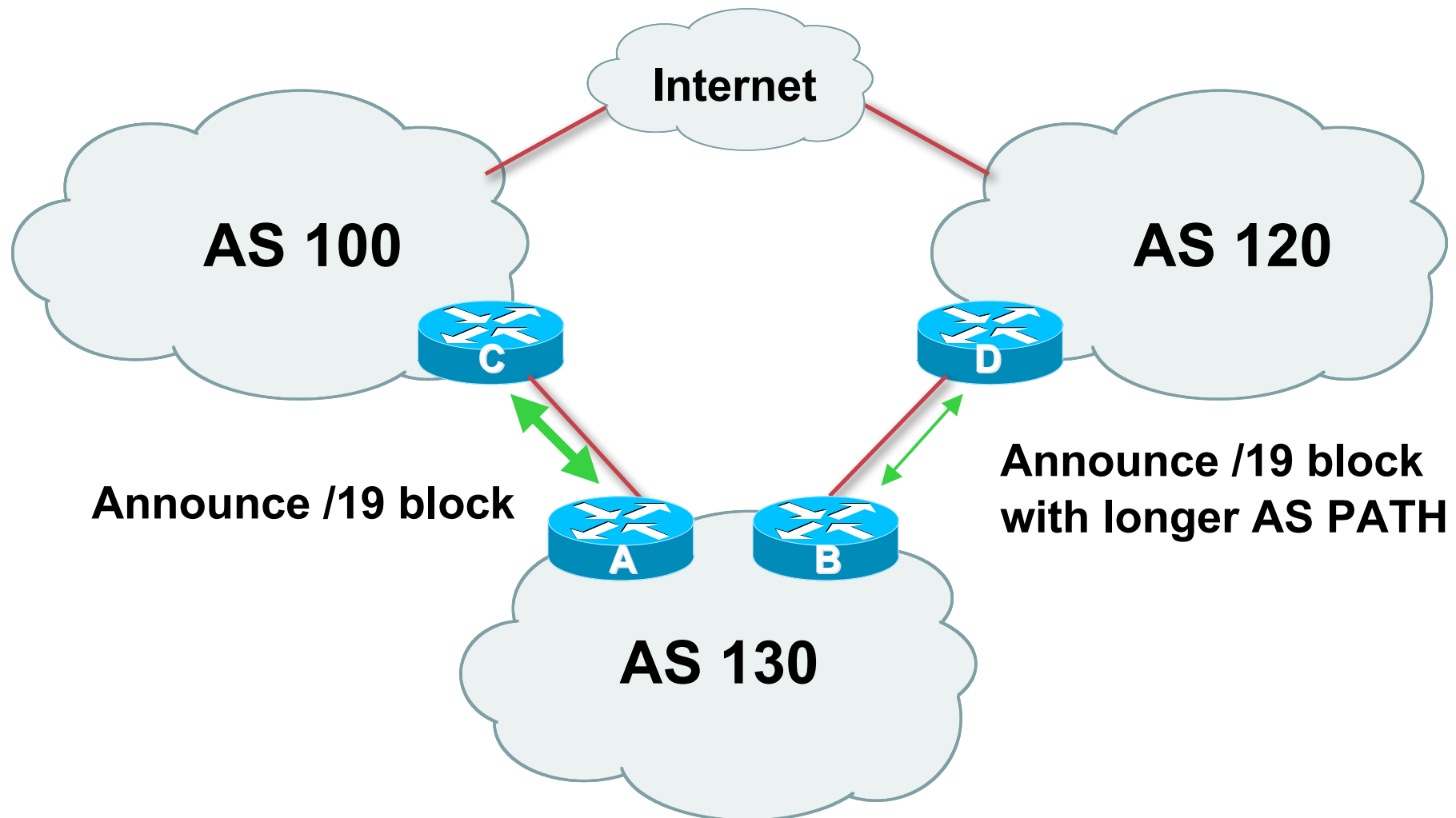
# Two links to different ISPs

**One link primary, the other link backup only**

## Two links to different ISPs (one as backup only)

- **Announce /19 aggregate on each link**  
primary link makes standard announcement  
backup link lengthens the AS PATH by using AS PATH prepend
- **When one link fails, the announcement of the /19 aggregate via the other link ensures continued connectivity**

## Two links to different ISPs (one as backup only)





# Two links to different ISPs (one as backup only)

- **Router A Configuration**

```
router bgp 130
  network 121.10.0.0 mask 255.255.224.0
  neighbor 122.102.10.1 remote-as 100
  neighbor 122.102.10.1 prefix-list aggregate out
  neighbor 122.102.10.1 prefix-list default in
!
ip prefix-list aggregate permit 121.10.0.0/19
ip prefix-list default permit 0.0.0.0/0
```

# Two links to different ISPs (one as backup only)

- **Router B Configuration**

```
router bgp 130
  network 121.10.0.0 mask 255.255.224.0
  neighbor 120.1.5.1 remote-as 120
  neighbor 120.1.5.1 prefix-list aggregate out
  neighbor 120.1.5.1 route-map routerD-out out
  neighbor 120.1.5.1 prefix-list default in
  neighbor 120.1.5.1 route-map routerD-in in
!
ip prefix-list aggregate permit 121.10.0.0/19
ip prefix-list default permit 0.0.0.0/0
!
route-map routerD-out permit 10
  set as-path prepend 130 130 130
!
route-map routerD-in permit 10
  set local-preference 80
```

## Two links to different ISPs (one as backup only)

- **Not a common situation as most sites tend to prefer using whatever capacity they have**
- **But it shows the basic concepts of using local-prefs and AS-path prepends for engineering traffic in the chosen direction**



# Two links to different ISPs

**With Loadsharing**

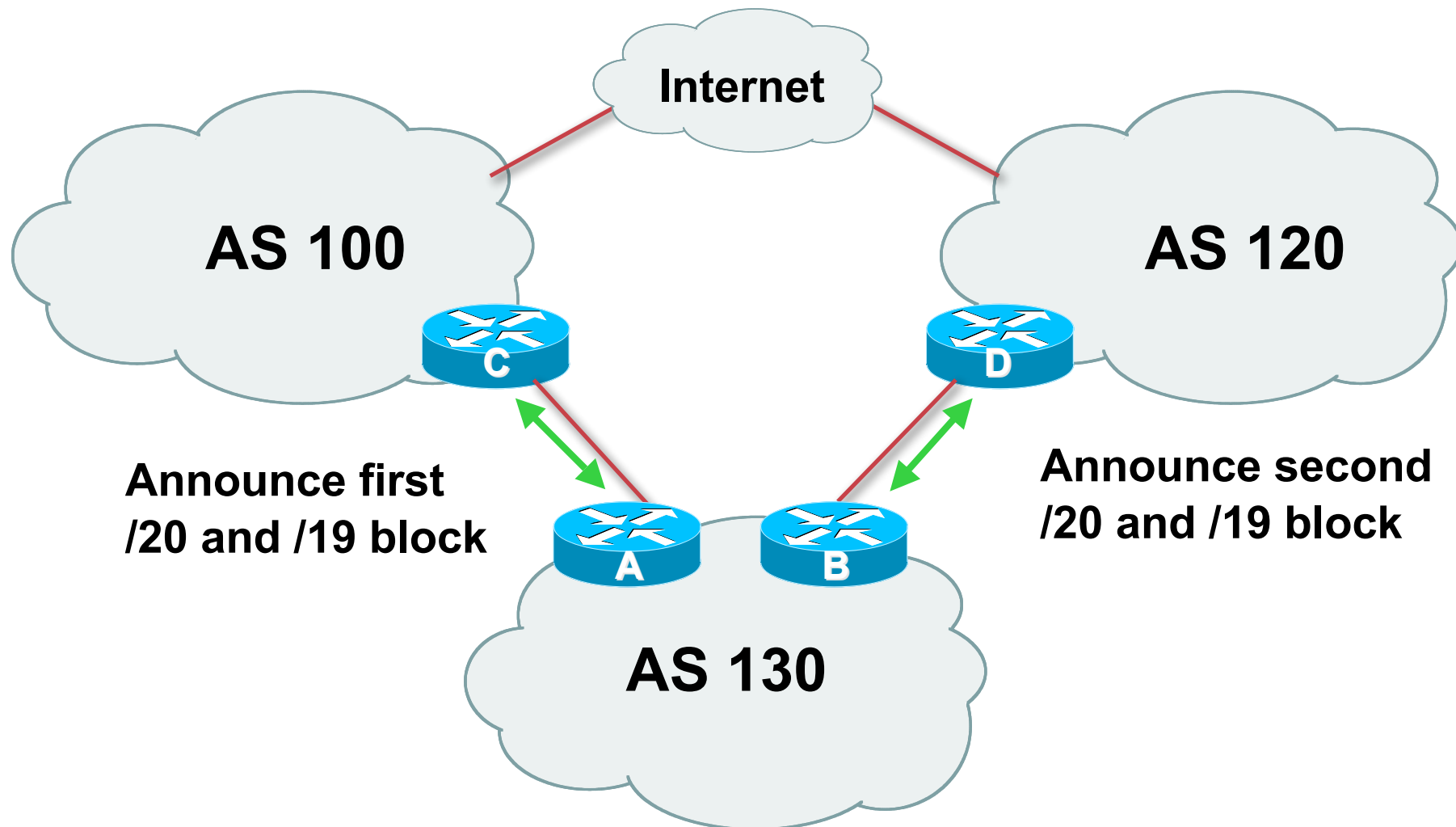
## Two links to different ISPs (with loadsharing)

- **Announce /19 aggregate on each link**
- **Split /19 and announce as two /20s, one on each link**

basic inbound loadsharing

- **When one link fails, the announcement of the /19 aggregate via the other ISP ensures continued connectivity**

# Two links to different ISPs (with loadsharing)



# Two links to different ISPs (with loadsharing)

- **Router A Configuration**

```
router bgp 130
  network 121.10.0.0 mask 255.255.224.0
  network 121.10.0.0 mask 255.255.240.0
  neighbor 122.102.10.1 remote-as 100
  neighbor 122.102.10.1 prefix-list firstblock out
  neighbor 122.102.10.1 prefix-list default in
!
ip prefix-list default permit 0.0.0.0/0
!
ip prefix-list firstblock permit 121.10.0.0/20
ip prefix-list firstblock permit 121.10.0.0/19
```

# Two links to different ISPs (with loadsharing)

- **Router B Configuration**

```
router bgp 130
  network 121.10.0.0 mask 255.255.224.0
  network 121.10.16.0 mask 255.255.240.0
  neighbor 120.1.5.1 remote-as 120
  neighbor 120.1.5.1 prefix-list secondblock out
  neighbor 120.1.5.1 prefix-list default in
!
ip prefix-list default permit 0.0.0.0/0
!
ip prefix-list secondblock permit 121.10.16.0/20
ip prefix-list secondblock permit 121.10.0.0/19
```



## Two links to different ISPs (with loadsharing)

- **Loadsharing in this case is very basic**
- **But shows the first steps in designing a load sharing solution**

**Start with a simple concept**

**And build on it...!**



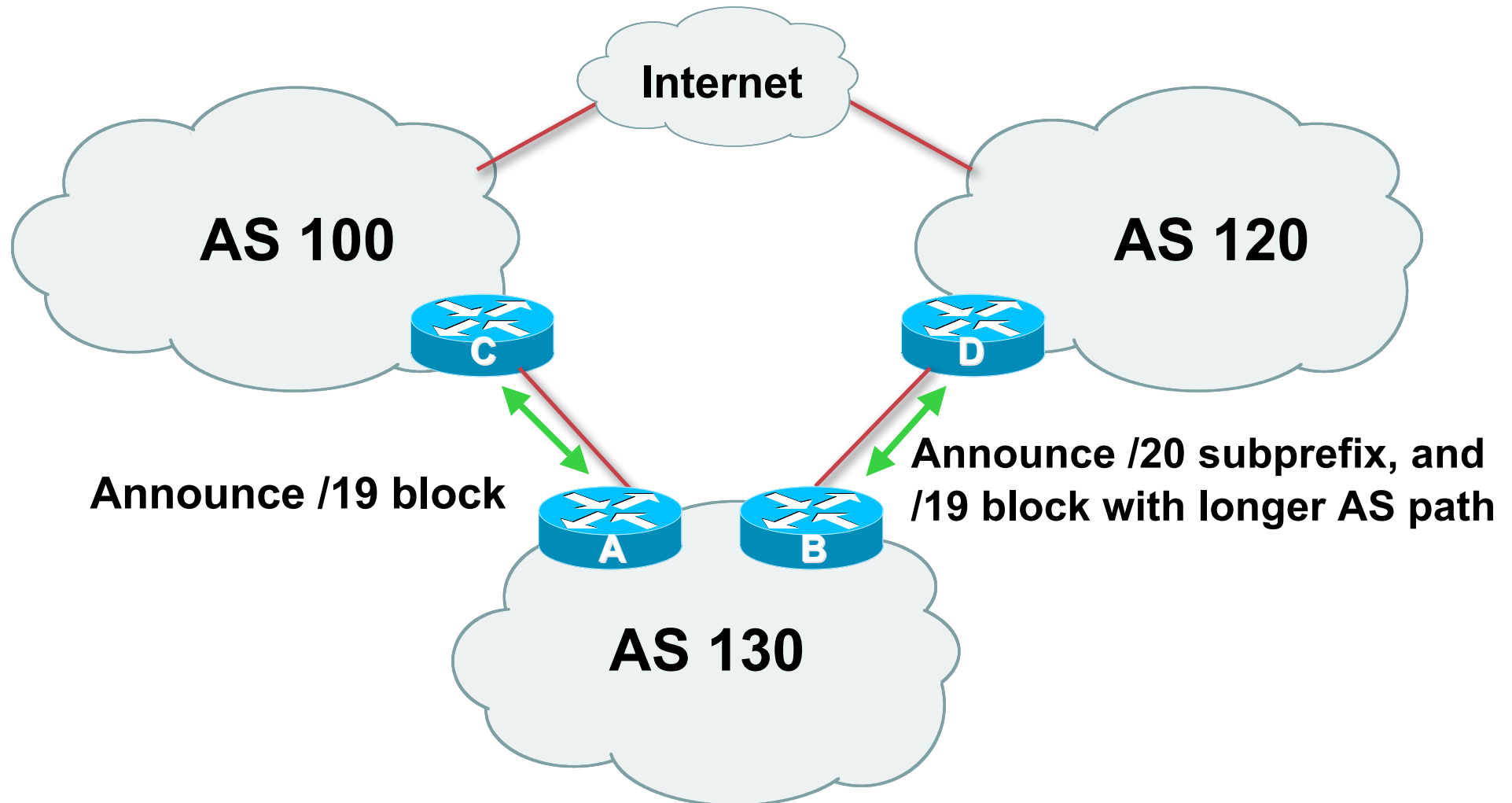
# Two links to different ISPs

**More Controlled Loadsharing**

# Loadsharing with different ISPs

- **Announce /19 aggregate on each link**
  - On first link, announce /19 as normal**
  - On second link, announce /19 with longer AS PATH, and announce one /20 subprefix**
    - controls loadsharing between upstreams and the Internet**
- **Vary the subprefix size and AS PATH length until “perfect” loadsharing achieved**
- **Still require redundancy!**

# Loadsharing with different ISPs



# Loadsharing with different ISPs

- **Router A Configuration**

```
router bgp 130
  network 121.10.0.0 mask 255.255.224.0
  neighbor 122.102.10.1 remote-as 100
  neighbor 122.102.10.1 prefix-list default in
  neighbor 122.102.10.1 prefix-list aggregate out
!
ip prefix-list aggregate permit 121.10.0.0/19
```

# Loadsharing with different ISPs

- Router B Configuration

```
router bgp 130
  network 121.10.0.0 mask 255.255.224.0
  network 121.10.16.0 mask 255.255.240.0
  neighbor 120.1.5.1 remote-as 120
  neighbor 120.1.5.1 prefix-list default in
  neighbor 120.1.5.1 prefix-list subblocks out
  neighbor 120.1.5.1 route-map routerD out
!
route-map routerD permit 10
  match ip address prefix-list aggregate
  set as-path prepend 130 130
route-map routerD permit 20
!
ip prefix-list subblocks permit 121.10.0.0/19 le 20
ip prefix-list aggregate permit 121.10.0.0/19
```

# Loadsharing with different ISPs

- **This example is more commonplace**
- **Shows how ISPs and end-sites subdivide address space frugally, as well as use the AS-PATH prepend concept to optimise the load sharing between different ISPs**
- **Notice that the /19 aggregate block is ALWAYS announced**

# BGP Multihoming Techniques

- **Why Multihome?**
- **Definition & Options**
- **Preparing the Network**
- **Basic Multihoming**
- **“BGP Traffic Engineering”**
- **Using Communities**





# Service Provider Multihoming

## BGP Traffic Engineering

# Service Provider Multihoming

- **Previous examples dealt with loadsharing inbound traffic**
  - Of primary concern at Internet edge**
  - What about outbound traffic?**
- **Transit ISPs strive to balance traffic flows in both directions**
  - Balance link utilisation**
  - Try and keep most traffic flows symmetric**
  - Some edge ISPs try and do this too**
- **The original “Traffic Engineering”**

# Service Provider Multihoming

- **Balancing outbound traffic requires inbound routing information**

**Common solution is “full routing table”**

**Rarely necessary**

**Why use the “routing mallet” to try solve loadsharing problems?**

**“Keep It Simple” is often easier (and \$\$\$ cheaper) than carrying N-copies of the full routing table**

# Service Provider Multihoming MYTHS!!

- **Common MYTHS**
- **1: You need the full routing table to multihome**
  - People who sell router memory would like you to believe this
  - Only true if you are a transit provider
  - Full routing table can be a significant hindrance to multihoming
- **2: You need a BIG router to multihome**
  - Router size is related to data rates, not running BGP
  - In reality, to multihome, your router needs to:
    - Have two interfaces,
    - Be able to talk BGP to at least two peers,
    - Be able to handle BGP attributes,
    - Handle at least one prefix
- **3: BGP is complex**
  - In the wrong hands, yes it can be! Keep it Simple!

# Service Provider Multihoming: Some Strategies

- **Take the prefixes you need to aid traffic engineering**  
**Look at NetFlow data for popular sites**
- **Prefixes originated by your immediate neighbours and their neighbours will do more to aid load balancing than prefixes from ASNs many hops away**  
**Concentrate on local destinations**
- **Use default routing as much as possible**  
**Or use the full routing table with care**

# Service Provider Multihoming

- **Examples**

- One upstream, one local peer**

- One upstream, local exchange point**

- Two upstreams, one local peer**

- Tier-1 and regional upstreams, with local peers**

- **Require BGP and a public ASN**

- **Examples assume that the local network has their own /19 address block**



# Service Provider Multihoming

**One upstream, one local peer**

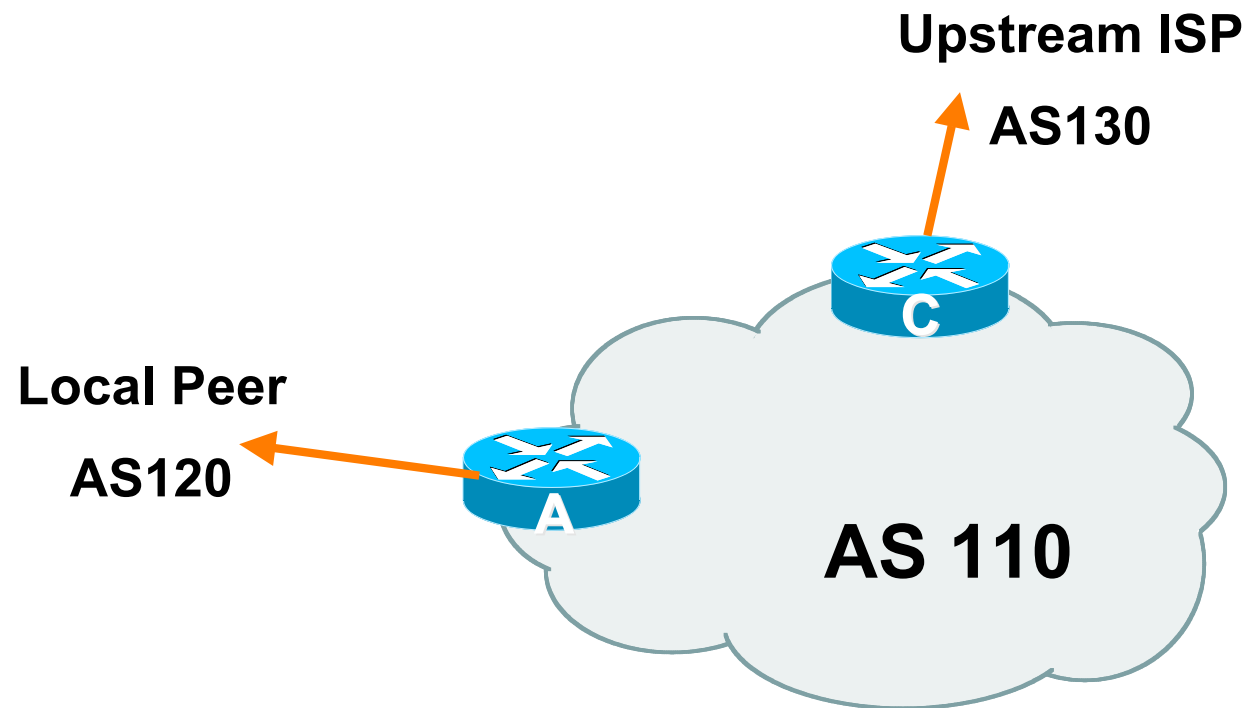
# One Upstream, One Local Peer

- **Very common situation in many regions of the Internet**
- **Connect to upstream transit provider to see the “Internet”**
- **Connect to the local competition so that local traffic stays local**

**Saves spending valuable \$ on upstream transit costs for local traffic**



# One Upstream, One Local Peer



# One Upstream, One Local Peer

- **Announce /19 aggregate on each link**
- **Accept default route only from upstream**  
Either 0.0.0.0/0 or a network which can be used as default
- **Accept all routes from local peer**

# One Upstream, One Local Peer

- Router A Configuration

```
router bgp 110
  network 121.10.0.0 mask 255.255.224.0
  neighbor 122.102.10.2 remote-as 120
  neighbor 122.102.10.2 prefix-list my-block out
  neighbor 122.102.10.2 prefix-list AS120-peer in
!
ip prefix-list AS120-peer permit 122.5.16.0/19
ip prefix-list AS120-peer permit 121.240.0.0/20
ip prefix-list my-block permit 121.10.0.0/19
!
ip route 121.10.0.0 255.255.224.0 null0
```

Prefix filters  
inbound




# One Upstream, One Local Peer

- Router A – Alternative Configuration

```
router bgp 110
  network 121.10.0.0 mask 255.255.224.0
  neighbor 122.102.10.2 remote-as 120
  neighbor 122.102.10.2 prefix-list my-block out
  neighbor 122.102.10.2 filter-list 10 in
!
ip as-path access-list 10 permit ^(120_)+$
!
ip prefix-list my-block permit 121.10.0.0/19
!
ip route 121.10.0.0 255.255.224.0 null0
```

AS Path filters –  
more “trusting”



# One Upstream, One Local Peer

- **Router C Configuration**

```
router bgp 110
  network 121.10.0.0 mask 255.255.224.0
  neighbor 122.102.10.1 remote-as 130
  neighbor 122.102.10.1 prefix-list default in
  neighbor 122.102.10.1 prefix-list my-block out
!
ip prefix-list my-block permit 121.10.0.0/19
ip prefix-list default permit 0.0.0.0/0
!
ip route 121.10.0.0 255.255.224.0 null0
```

# One Upstream, One Local Peer

- **Two configurations possible for Router A**
  - Filter-lists assume peer knows what they are doing**
  - Prefix-list higher maintenance, but safer**
  - Some ISPs use both**
- **Local traffic goes to and from local peer, everything else goes to upstream**

# Aside: Configuration Recommendation

- **Private Peers**

**The peering ISPs exchange prefixes they originate**

**Sometimes they exchange prefixes from neighbouring ASNs too**

- **Be aware that the private peer eBGP router should carry only the prefixes you want the private peer to receive**

**Otherwise they could point a default route to you and unintentionally transit your backbone**



# Service Provider Multihoming

**One Upstream, Local Exchange Point**

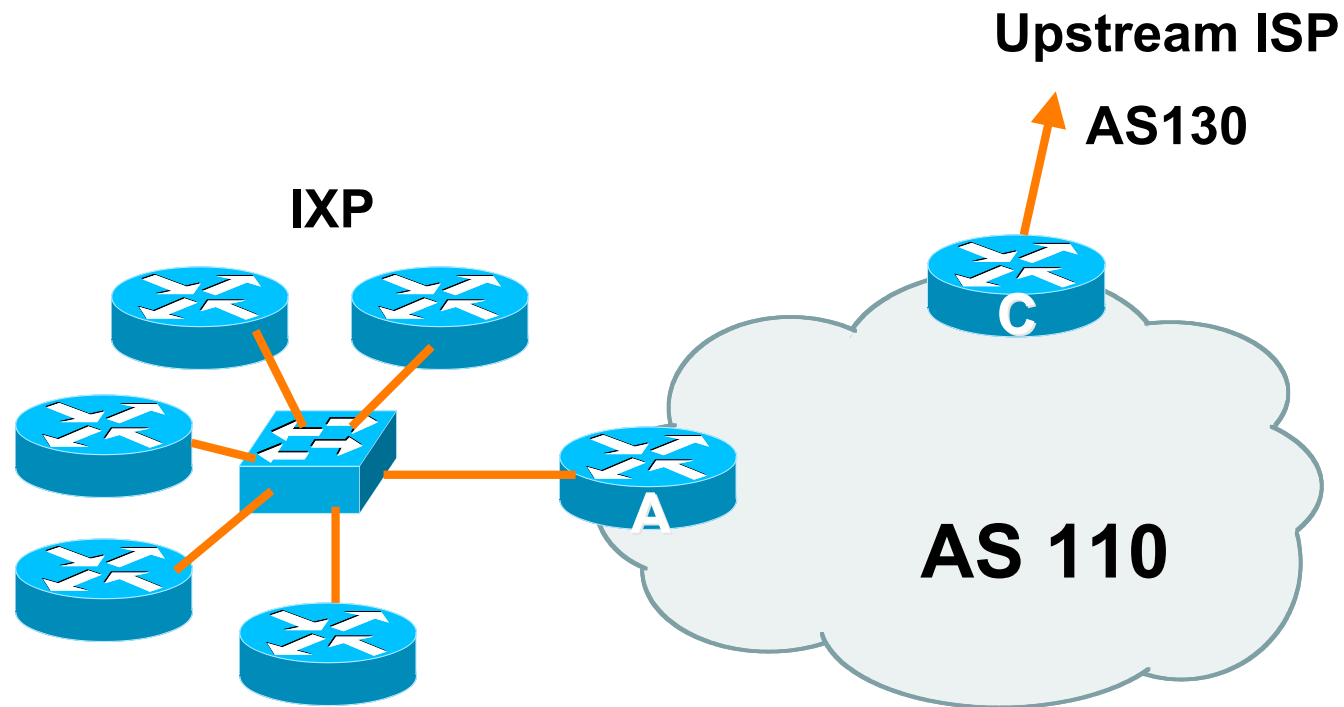


# One Upstream, Local Exchange Point

- **Very common situation in many regions of the Internet**
- **Connect to upstream transit provider to see the “Internet”**
- **Connect to the local Internet Exchange Point so that local traffic stays local**

**Saves spending valuable \$ on upstream transit costs for local traffic**

# One Upstream, Local Exchange Point



# One Upstream, Local Exchange Point

- **Announce /19 aggregate to every neighbouring AS**
- **Accept default route only from upstream**  
Either 0.0.0.0/0 or a network which can be used as default
- **Accept all routes originated by IXP peers**

# One Upstream, Local Exchange Point

- **Router A Configuration**

```
interface fastethernet 0/0
  description Exchange Point LAN
  ip address 120.5.10.1 mask 255.255.255.224
  ip verify unicast reverse-path
!
router bgp 110
  neighbor ixp-peers peer-group
  neighbor ixp-peers prefix-list my-block out
  neighbor ixp-peers remove-private-AS
  neighbor ixp-peers route-map set-local-pref in
..next slide
```

# One Upstream, Local Exchange Point

```
neighbor 120.5.10.2 remote-as 100
neighbor 120.5.10.2 peer-group ixp-peers
neighbor 120.5.10.2 prefix-list peer100 in
neighbor 120.5.10.3 remote-as 101
neighbor 120.5.10.3 peer-group ixp-peers
neighbor 120.5.10.3 prefix-list peer101 in
neighbor 120.5.10.4 remote-as 102
neighbor 120.5.10.4 peer-group ixp-peers
neighbor 120.5.10.4 prefix-list peer102 in
neighbor 120.5.10.5 remote-as 103
neighbor 120.5.10.5 peer-group ixp-peers
neighbor 120.5.10.5 prefix-list peer103 in
..next slide
```

# One Upstream, Local Exchange Point

```
!  
ip prefix-list my-block permit 121.10.0.0/19  
ip prefix-list peer100 permit 122.0.0.0/19  
ip prefix-list peer101 permit 122.30.0.0/19  
ip prefix-list peer102 permit 122.12.0.0/19  
ip prefix-list peer103 permit 122.18.128.0/19  
!  
route-map set-local-pref permit 10  
    set local-preference 150  
!
```

# One Upstream, Local Exchange

- **Note that Router A does not generate the aggregate for AS110**

**If Router A becomes disconnected from backbone, then the aggregate is no longer announced to the IX**

**BGP failover works as expected**

- **Note the inbound route-map which sets the local preference higher than the default**

**This ensures that local traffic crosses the IXP**

**(And avoids potential problems with uRPF check)**

# One Upstream, Local Exchange Point

- **Router C Configuration**

```
router bgp 110
  network 121.10.0.0 mask 255.255.224.0
  neighbor 122.102.10.1 remote-as 130
  neighbor 122.102.10.1 prefix-list default in
  neighbor 122.102.10.1 prefix-list my-block out
!
ip prefix-list my-block permit 121.10.0.0/19
ip prefix-list default permit 0.0.0.0/0
!
ip route 121.10.0.0 255.255.224.0 null0
```



# One Upstream, Local Exchange Point

- **Note Router A configuration**
  - Prefix-list higher maintenance, but safer**
  - uRPF on the IX facing interface**
  - No generation of AS110 aggregate**
- **IXP traffic goes to and from local IXP, everything else goes to upstream**

## Aside: IXP Configuration Recommendation

- **IXP peers**

**The peering ISPs at the IXP exchange prefixes they originate**

**Sometimes they exchange prefixes from neighbouring ASNs too**

- **Be aware that the IXP border router should carry only the prefixes you want the IXP peers to receive and the destinations you want them to be able to reach**

**Otherwise they could point a default route to you and unintentionally transit your backbone**

- **If IXP router is at IX, and distant from your backbone**

**Don't originate your address block at your IXP router**



# Service Provider Multihoming

**Two Upstreams, One local peer**

# Two Upstreams, One Local Peer

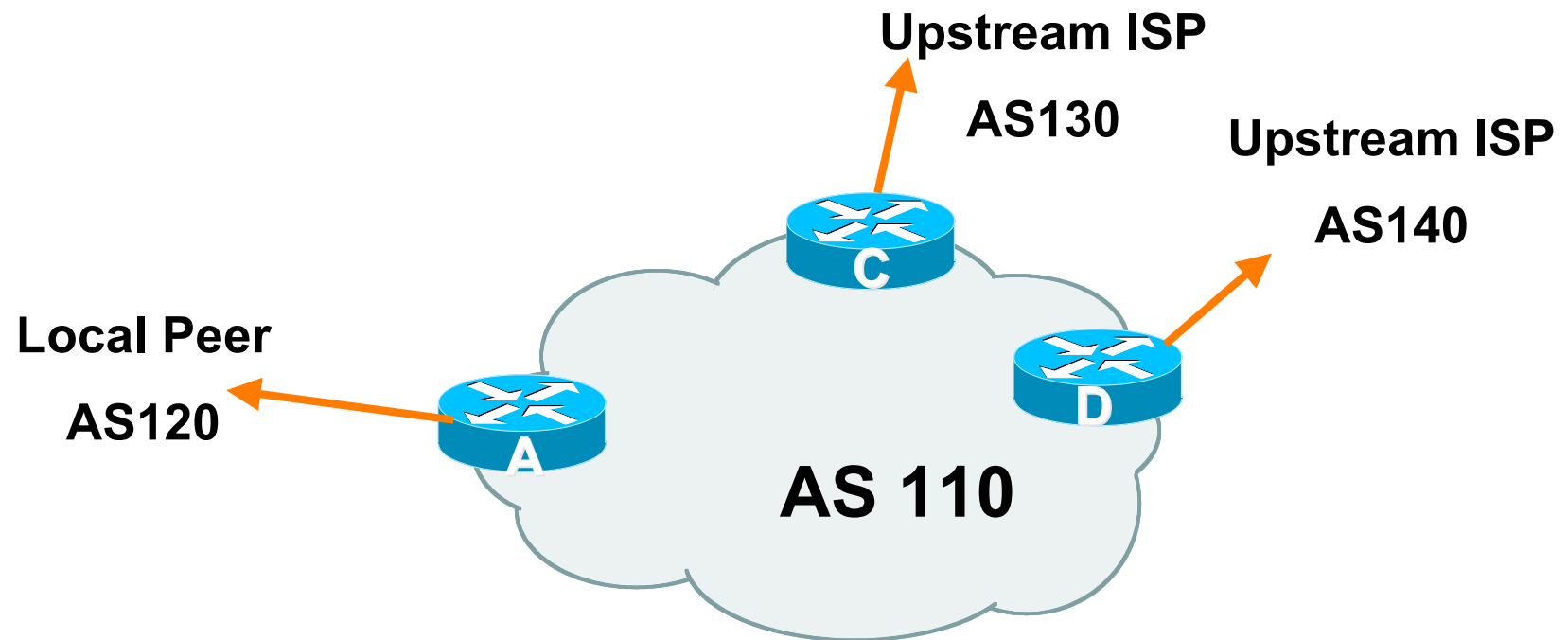
- **Connect to both upstream transit providers to see the “Internet”**

**Provides external redundancy and diversity – the reason to multihome**

- **Connect to the local peer so that local traffic stays local**

**Saves spending valuable \$ on upstream transit costs for local traffic**

# Two Upstreams, One Local Peer



# Two Upstreams, One Local Peer

- **Announce /19 aggregate on each link**
- **Accept default route only from upstreams**  
Either 0.0.0.0/0 or a network which can be used as default
- **Accept all routes from local peer**

# Two Upstreams, One Local Peer

- **Router A**

**Same routing configuration as in example with one upstream and one local peer**

**Same hardware configuration**

# Two Upstreams, One Local Peer

- **Router C Configuration**

```
router bgp 110
  network 121.10.0.0 mask 255.255.224.0
  neighbor 122.102.10.1 remote-as 130
  neighbor 122.102.10.1 prefix-list default in
  neighbor 122.102.10.1 prefix-list my-block out
!
ip prefix-list my-block permit 121.10.0.0/19
ip prefix-list default permit 0.0.0.0/0
!
ip route 121.10.0.0 255.255.224.0 null0
```



# Two Upstreams, One Local Peer

- **Router D Configuration**

```
router bgp 110
  network 121.10.0.0 mask 255.255.224.0
  neighbor 122.102.10.5 remote-as 140
  neighbor 122.102.10.5 prefix-list default in
  neighbor 122.102.10.5 prefix-list my-block out
!
ip prefix-list my-block permit 121.10.0.0/19
ip prefix-list default permit 0.0.0.0/0
!
ip route 121.10.0.0 255.255.224.0 null0
```

# Two Upstreams, One Local Peer

- **This is the simple configuration for Router C and D**
- **Traffic out to the two upstreams will take nearest exit**

**Inexpensive routers required**

**This is not useful in practice especially for international links**

**Loadsharing needs to be better**

# Two Upstreams, One Local Peer

- **Better configuration options:**

**Accept full routing from both upstreams**

**Expensive & unnecessary!**

**Accept default from one upstream and some routes from the other upstream**

**The way to go!**


# Two Upstreams, One Local Peer

## Full Routes

- Router C Configuration

```
router bgp 110
  network 121.10.0.0 mask 255.255.224.0
  neighbor 122.102.10.1 remote-as 130
  neighbor 122.102.10.1 prefix-list rfc1918-deny in
  neighbor 122.102.10.1 prefix-list my-block out
  neighbor 122.102.10.1 route-map AS130-loadshare in
!
ip prefix-list my-block permit 121.10.0.0/19
! See www.cymru.com/Documents/bogon-list.html
! ...for "RFC1918 and friends" list
..next slide
```

Allow all prefixes in  
apart from RFC1918  
and friends



# Two Upstreams, One Local Peer

## Full Routes

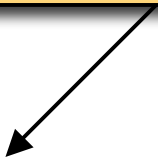
```
ip route 121.10.0.0 255.255.224.0 null0
!
ip as-path access-list 10 permit ^(130_)+$
ip as-path access-list 10 permit ^(130_)+_[0-9]+$
!
route-map AS130-loadshare permit 10
  match ip as-path 10
  set local-preference 120
route-map AS130-loadshare permit 20
  set local-preference 80
!
```

# Two Upstreams, One Local Peer Full Routes

- **Router D Configuration**

```
router bgp 110
  network 121.10.0.0 mask 255.255.224.0
  neighbor 122.102.10.5 remote-as 140
  neighbor 122.102.10.5 prefix-list rfc1918-deny in
  neighbor 122.102.10.5 prefix-list my-block out
!
ip prefix-list my-block permit 121.10.0.0/19
! See www.cymru.com/Documents/bogon-list.html
! ...for "RFC1918 and friends" list
```

Allow all prefixes in  
apart from RFC1918  
and friends



# Two Upstreams, One Local Peer

## Full Routes

- **Router C configuration:**
  - Accept full routes from AS130**
  - Tag prefixes originated by AS130 and AS130's neighbouring ASes with local preference 120**
    - Traffic to those ASes will go over AS130 link**
  - Remaining prefixes tagged with local preference of 80**
    - Traffic to other all other ASes will go over the link to AS140**
- **Router D configuration same as Router C without the route-map**

# Two Upstreams, One Local Peer

## Full Routes

- **Full routes from upstreams**

**Expensive – needs lots of memory and CPU**

**Need to play preference games**

**Previous example is only an example – real life will need improved fine-tuning!**

**Previous example doesn't consider inbound traffic – see earlier in presentation for examples**



# Two Upstreams, One Local Peer

## Partial Routes

- **Strategy:**

**Ask one upstream for a default route**

**Easy to originate default towards a BGP neighbour**

**Ask other upstream for a full routing table**

**Then filter this routing table based on neighbouring ASN**

**E.g. want traffic to their neighbours to go over the link to that ASN**

**Most of what upstream sends is thrown away**

**Easier than asking the upstream to set up custom BGP filters for you**

# Two Upstreams, One Local Peer Partial Routes

- Router C Configuration

```
router bgp 110
```

```
network 121.10.0.0 mask 255.255.224.0
```

```
neighbor 122.102.10.1 remote-as 130
```

```
neighbor 122.102.10.1 prefix-list rfc1918-nodef-deny in
```

```
neighbor 122.102.10.1 prefix-list my-block out
```

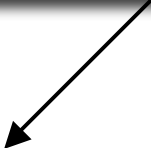
```
neighbor 122.102.10.1 filter-list 10 in
```

```
neighbor 122.102.10.1 route-map tag-default-low in
```

```
!
```

```
..next slide
```

Allow all prefixes  
and default in; deny  
RFC1918 and friends



AS filter list filters  
prefixes based on  
origin ASN



# Two Upstreams, One Local Peer

## Partial Routes

```
ip prefix-list my-block permit 121.10.0.0/19
ip prefix-list default permit 0.0.0.0/0
!
ip route 121.10.0.0 255.255.224.0 null0
!
ip as-path access-list 10 permit ^(130_)+$
ip as-path access-list 10 permit ^(130_)+_[0-9]+$
!
route-map tag-default-low permit 10
  match ip address prefix-list default
  set local-preference 80
route-map tag-default-low permit 20
!
```

# Two Upstreams, One Local Peer

## Partial Routes

- **Router D Configuration**

```
router bgp 110
  network 121.10.0.0 mask 255.255.224.0
  neighbor 122.102.10.5 remote-as 140
  neighbor 122.102.10.5 prefix-list default in
  neighbor 122.102.10.5 prefix-list my-block out
!
ip prefix-list my-block permit 121.10.0.0/19
ip prefix-list default permit 0.0.0.0/0
!
ip route 121.10.0.0 255.255.224.0 null0
```

# Two Upstreams, One Local Peer

## Partial Routes

- **Router C configuration:**

**Accept full routes from AS130**

**(or get them to send less)**

**Filter ASNs so only AS130 and AS130's neighbouring ASes are accepted**

**Allow default, and set it to local preference 80**

**Traffic to those ASes will go over AS130 link**

**Traffic to other all other ASes will go over the link to AS140**

**If AS140 link fails, backup via AS130 – and vice-versa**

# Two Upstreams, One Local Peer

## Partial Routes

- **Partial routes from upstreams**

**Not expensive – only carry the routes necessary for loadsharing**

**Need to filter on AS paths**

**Previous example is only an example – real life will need improved fine-tuning!**

**Previous example doesn't consider inbound traffic – see earlier in presentation for examples**

# Two Upstreams, One Local Peer

- **When upstreams cannot or will not announce default route**

**Because of operational policy against using “default-originate” on BGP peering**

**Solution is to use IGP to propagate default from the edge/peering routers**

# Two Upstreams, One Local Peer Partial Routes

- **Router C Configuration**

```
router ospf 110
  default-information originate metric 30
  passive-interface Serial 0/0
!
router bgp 110
  network 121.10.0.0 mask 255.255.224.0
  neighbor 122.102.10.1 remote-as 130
  neighbor 122.102.10.1 prefix-list rfc1918-deny in
  neighbor 122.102.10.1 prefix-list my-block out
  neighbor 122.102.10.1 filter-list 10 in
!
..next slide
```



# Two Upstreams, One Local Peer

## Partial Routes

```
ip prefix-list my-block permit 121.10.0.0/19
! See www.cymru.com/Documents/bogon-list.html
! ...for "RFC1918 and friends" list
!
ip route 121.10.0.0 255.255.224.0 null0
ip route 0.0.0.0 0.0.0.0 serial 0/0 254
!
ip as-path access-list 10 permit ^(130_)+$
ip as-path access-list 10 permit ^(130_)+_[0-9]+$
!
```

# Two Upstreams, One Local Peer Partial Routes

- **Router D Configuration**

```
router ospf 110
  default-information originate metric 10
  passive-interface Serial 0/0
!
router bgp 110
  network 121.10.0.0 mask 255.255.224.0
  neighbor 122.102.10.5 remote-as 140
  neighbor 122.102.10.5 prefix-list deny-all in
  neighbor 122.102.10.5 prefix-list my-block out
!
..next slide
```

# Two Upstreams, One Local Peer

## Partial Routes

```
ip prefix-list deny-all deny 0.0.0.0/0 le 32
ip prefix-list my-block permit 121.10.0.0/19
!
ip route 121.10.0.0 255.255.224.0 null0
ip route 0.0.0.0 0.0.0.0 serial 0/0 254
!
```

# Two Upstreams, One Local Peer

## Partial Routes

- **Partial routes from upstreams**

**Use OSPF to determine outbound path**

**Router D default has metric 10 – primary outbound path**

**Router C default has metric 30 – backup outbound path**

**Serial interface goes down, static default is removed from routing table, OSPF default withdrawn**

## Aside: Configuration Recommendation

- **When distributing internal default by iBGP or OSPF**

**Make sure that routers connecting to private peers or to IXPs do NOT carry the default route**

**Otherwise they could point a default route to you and unintentionally transit your backbone**

**Simple fix for Private Peer/IXP routers:**

```
ip route 0.0.0.0 0.0.0.0 null0
```



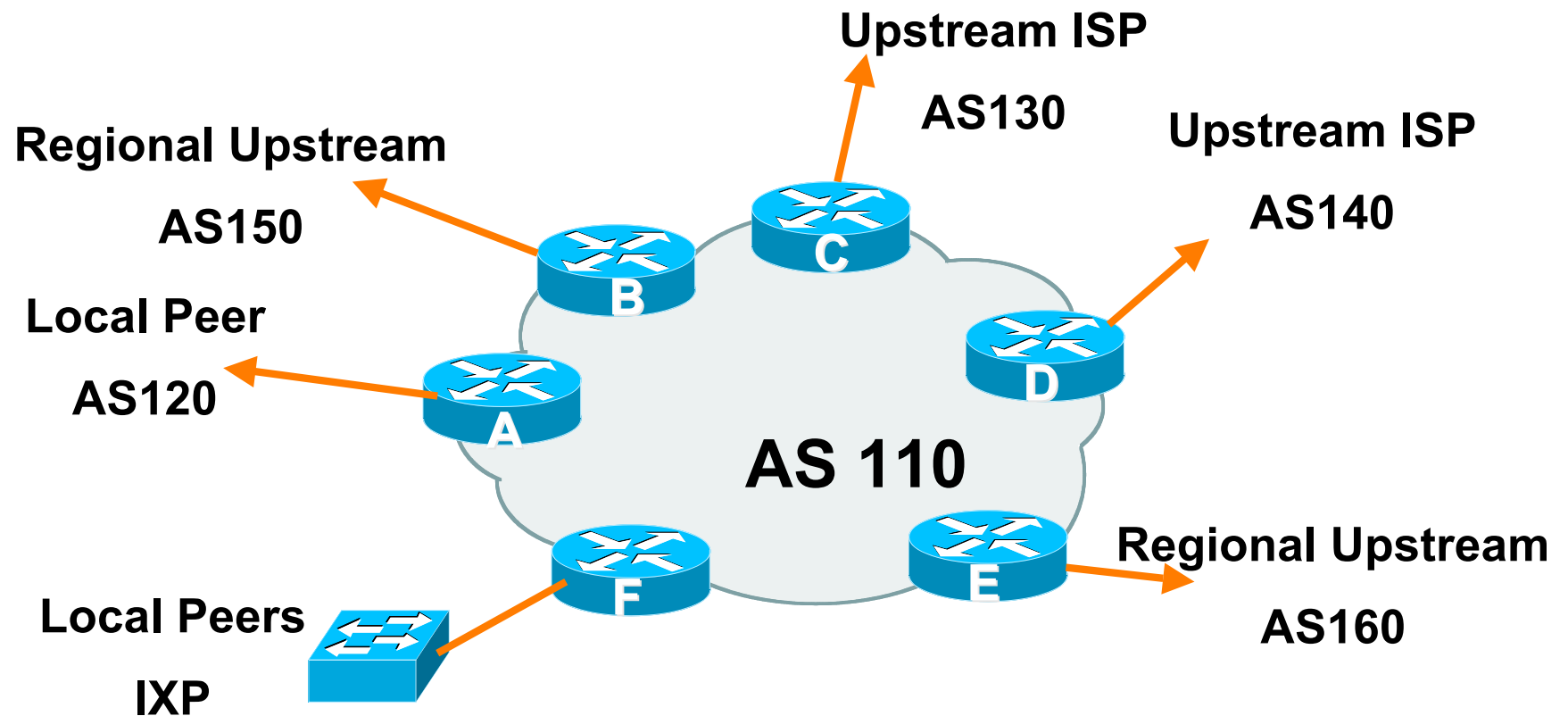
# Service Provider Multihoming

**Two Tier-1 upstreams, two regional upstreams, and  
local peers**

# Tier-1 & Regional Upstreams, Local Peers

- **This is a complex example, bringing together all the concepts learned so far**
- **Connect to both upstream transit providers to see the “Internet”**
  - Provides external redundancy and diversity – the reason to multihome**
- **Connect to regional upstreams**
  - Hopefully a less expensive and lower latency view of the regional internet than is available through upstream transit provider**
- **Connect to private peers for local peering purposes**
- **Connect to the local Internet Exchange Point so that local traffic stays local**
  - Saves spending valuable \$ on upstream transit costs for local traffic**

# Tier-1 & Regional Upstreams, Local Peers





## Tier-1 & Regional Upstreams, Local Peers

- **Announce /19 aggregate on each link**
- **Accept partial/default routes from upstreams**
  - For default, use 0.0.0.0/0 or a network which can be used as default
- **Accept all routes from local peer**
- **Accept all partial routes from regional upstreams**
- **This is more complex, but a very typical scenario**

# Tier-1 & Regional Upstreams, Local Peers Detail

- **Router A – local private peer**
  - Accept all (local) routes**
  - Local traffic stays local**
  - Use prefix and/or AS-path filters**
  - Use local preference (if needed)**
- **Router F – local IXP peering**
  - Accept all (local) routes**
  - Local traffic stays local**
  - Use prefix and/or AS-path filters**

# Tier-1 & Regional Upstreams, Local Peers Detail

- **Router B – regional upstream**

**They provide transit to Internet, but longer AS path than Tier-1s**

**Accept all regional routes from them**

**e.g. ^150\_[0-9]+\$**

**Ask them to send default, or send a network you can use as default**

**Set local pref on “default” to 60**

**Will provide backup to Internet only when direct Tier-1 links go down**

# Tier-1 & Regional Upstreams, Local Peers Detail

- **Router E – regional upstream**

**They provide transit to Internet, but longer AS path than Tier-1s**

**Accept all regional routes from them**

**e.g. `^160_[0-9]+$`**

**Ask them to send default, or send a network you can use as default**

**Set local pref on “default” to 70**

**Will provide backup to Internet only when direct Tier-1 links go down**

# Tier-1 & Regional Upstreams, Local Peers Detail

- **Router C – first Tier-1**

**Accept all their customer and AS neighbour routes from them**

**e.g. ^130\_[0-9]+\$**

**Ask them to send default, or send a network you can use as default**

**Set local pref on “default” to 80**

**Will provide backup to Internet only when link to second Tier-1 goes down**

# Tier-1 & Regional Upstreams, Local Peers Detail

- **Router D – second Tier-1**

**Ask them to send default, or send a network you can use as default**

**This has local preference 100 by default**

**All traffic without any more specific path will go out this way**

# Tier-1 & Regional Upstreams, Local Peers Summary

- **Local traffic goes to local peer and IXP**
- **Regional traffic goes to two regional upstreams**
- **Everything else is shared between the two Tier-1s**
- **To modify loadsharing tweak what is heard from the two regionals and the first Tier-1**

**Best way is through modifying the AS-path filter**

## Tier-1 & Regional Upstreams, Local Peers

- **What about outbound announcement strategy?**

**This is to determine incoming traffic flows**

**/19 aggregate must be announced to everyone!**

**/20 or /21 more specifics can be used to improve or modify loadsharing**

**See earlier for hints and ideas**



## Tier-1 & Regional Upstreams, Local Peers

- **What about unequal circuit capacity?**  
**AS-path filters are very useful**
- **What if upstream will only give me full routing table or nothing**  
**AS-path and prefix filters are very useful**

# BGP Multihoming Techniques

- **Why Multihome?**
- **Definition & Options**
- **Preparing the Network**
- **Basic Multihoming**
- **“BGP Traffic Engineering”**
- **Using Communities**



# Communities

**How they are used in practice**

# Using Communities: RFC1998

- **Informational RFC**
- **Describes how to implement loadsharing and backup on multiple inter-AS links**
  - BGP communities used to determine local preference in upstream's network**
- **Gives control to the customer**
- **Simplifies upstream's configuration**
  - simplifies network operation!**

# RFC1998

- **Community values defined to have particular meanings:**

<b>ASx:100</b>	<b>set local pref 100</b>	<b>preferred route</b>
<b>ASx:90</b>	<b>set local pref 90</b>	<b>backup route if dualhomed on ASx</b>
<b>ASx:80</b>	<b>set local pref 80</b>	<b>main link is to another ISP with same AS path length</b>
<b>ASx:70</b>	<b>set local pref 70</b>	<b>main link is to another ISP</b>

# RFC1998

- **Sample Customer Router Configuration**

```
router bgp 130
  neighbor x.x.x.x remote-as 100
  neighbor x.x.x.x description Backup ISP
  neighbor x.x.x.x route-map config-community out
  neighbor x.x.x.x send-community
!
ip as-path access-list 20 permit ^$
ip as-path access-list 20 deny .*
!
route-map config-community permit 10
  match as-path 20
  set community 100:90
```

# RFC1998

- **Sample ISP Router Configuration**

```
! Homed to another ISP
```

```
ip community-list 70 permit 100:70
```

```
! Homed to another ISP with equal ASPATH length
```

```
ip community-list 80 permit 100:80
```

```
! Customer backup routes
```

```
ip community-list 90 permit 100:90
```

```
!
```

```
route-map set-customer-local-pref permit 10
```

```
  match community 70
```

```
  set local-preference 70
```

# RFC1998

- **Sample ISP Router Configuration**

```
route-map set-customer-local-pref permit 20
  match community 80
  set local-preference 80
!
route-map set-customer-local-pref permit 30
  match community 90
  set local-preference 90
!
route-map set-customer-local-pref permit 40
  set local-preference 100
```



# RFC1998

- **Supporting RFC1998**

**Many ISPs do, more should**

**Check AS object in the Internet Routing Registry**

**If you do, insert comment in AS object in the IRR**

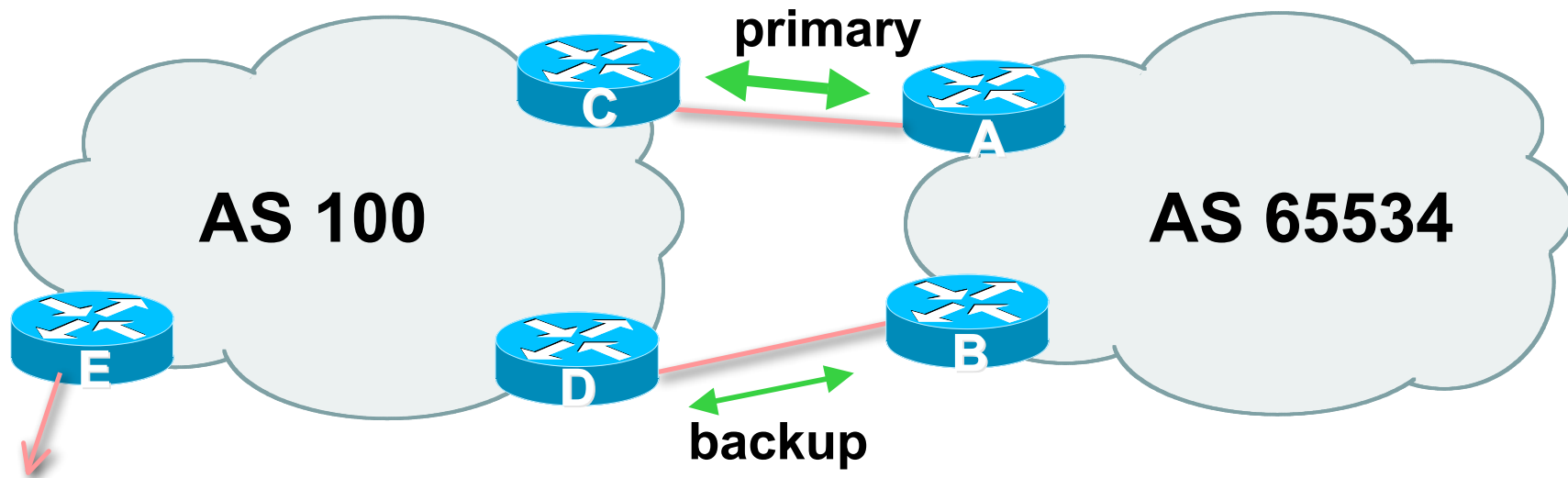
**Or make a note on your website**



# Two links to the same ISP

**One link primary, the other link backup only**

# Two links to the same ISP



- **AS100 proxy aggregates for AS 65534**

## Two links to the same ISP (one as backup only)

- **Announce /19 aggregate on each link**  
primary link makes standard announcement  
backup link sends community
- **When one link fails, the announcement of the /19 aggregate via the other link ensures continued connectivity**

# Two links to the same ISP (one as backup only)

- **Router A Configuration**

```
router bgp 65534
  network 121.10.0.0 mask 255.255.224.0
  neighbor 122.102.10.2 remote-as 100
  neighbor 122.102.10.2 description RouterC
  neighbor 122.102.10.2 prefix-list aggregate out
  neighbor 122.102.10.2 prefix-list default in
!
ip prefix-list aggregate permit 121.10.0.0/19
ip prefix-list default permit 0.0.0.0/0
!
```

# Two links to the same ISP (one as backup only)

- **Router B Configuration**

```
router bgp 65534
  network 121.10.0.0 mask 255.255.224.0
  neighbor 122.102.10.6 remote-as 100
  neighbor 122.102.10.6 description RouterD
  neighbor 122.102.10.6 send-community
  neighbor 122.102.10.6 prefix-list aggregate out
  neighbor 122.102.10.6 route-map routerD-out out
  neighbor 122.102.10.6 prefix-list default in
  neighbor 122.102.10.6 route-map routerD-in in
!
..next slide
```

# Two links to the same ISP (one as backup only)

```
ip prefix-list aggregate permit 121.10.0.0/19
ip prefix-list default permit 0.0.0.0/0
!
route-map routerD-out permit 10
  match ip address prefix-list aggregate
  set community 100:90
route-map routerD-out permit 20
!
route-map routerD-in permit 10
  set local-preference 90
!
```

# Two links to the same ISP (one as backup only)

- **Router C Configuration (main link)**

```
router bgp 100
```

```
neighbor 122.102.10.1 remote-as 65534
```

```
neighbor 122.102.10.1 default-originate
```

```
neighbor 122.102.10.1 prefix-list Customer in
```

```
neighbor 122.102.10.1 prefix-list default out
```

```
!
```

```
ip prefix-list Customer permit 121.10.0.0/19
```

```
ip prefix-list default permit 0.0.0.0/0
```



# Two links to the same ISP (one as backup only)

- **Router D Configuration (backup link)**

```
router bgp 100
  neighbor 122.102.10.5 remote-as 65534
  neighbor 122.102.10.5 default-originate
  neighbor 122.102.10.5 prefix-list Customer in
  neighbor 122.102.10.5 route-map bgp-cust-in in
  neighbor 122.102.10.5 prefix-list default out
!
ip prefix-list Customer permit 121.10.0.0/19
ip prefix-list default permit 0.0.0.0/0
!
..next slide
```

# Two links to the same ISP (one as backup only)

```
ip prefix-list Customer permit 121.10.0.0/19
ip prefix-list default permit 0.0.0.0/0
!
ip community-list 90 permit 100:90
!
```

<snip>

```
route-map bgp-cust-in permit 30
  match community 90
  set local-preference 90
route-map bgp-cust-in permit 40
  set local-preference 100
```

## Two links to the same ISP (one as backup only)

- **This is a simple example**
- **It looks more complicated than the same example presented earlier which used local preference and MEDs**
- **But the advantage is that this scales better**  
**With larger configurations, more customers, more options, it becomes easier to handle each and every requirement**



# Service Provider use of Communities

**Some working examples**

# Background

- **RFC1998 is okay for “simple” multihomed customers**

**assumes that upstreams are interconnected**

- **ISPs have created many other communities to handle more complex situations**

**Simplify ISP BGP configuration**

**Give customer more policy control**

# ISP BGP Communities

- **There are no recommended ISP BGP communities apart from RFC1998**  
**The four standard communities**  
[www.iana.org/assignments/bgp-well-known-communities](http://www.iana.org/assignments/bgp-well-known-communities)
- **Efforts have been made to document from time to time**  
[totem.info.ucl.ac.be/publications/papers-elec-versions/draft-quoitin-bgp-comm-survey-00.pdf](http://totem.info.ucl.ac.be/publications/papers-elec-versions/draft-quoitin-bgp-comm-survey-00.pdf)  
**But so far... nothing more... ☹**  
**Collection of ISP communities at [www.onesc.net/communities](http://www.onesc.net/communities)**
- **ISP policy is usually published**  
**On the ISP's website**  
**Referenced in the AS Object in the IRR**

# Some ISP Examples: Sprintlink

WHAT YOU CAN CONTROL

## AS-PATH PREPENDS

Sprint allows customers to use AS-path prepending to adjust route preference on the network. Such prepending will be received and passed on properly without notifying Sprint of your change in announcements.

Additionally, Sprint will prepend AS1239 to eBGP sessions with certain autonomous systems depending on a received community. Currently, the following ASes are supported: 1668, 209, 2914, 3300, 3356, 3549, 3561, 4635, 701, 7018, 702 and 8220.

String	Resulting AS Path to ASXXX
65000:XXX	Do not advertise to ASXXX
65001:XXX	1239 (default) ...
65002:XXX	1239 1239 ...
65003:XXX	1239 1239 1239 ...
65004:XXX	1239 1239 1239 1239 ...
String	Resulting AS Path to ASXXX in Asia
65070:XXX	Do not advertise to ASXXX
65071:XXX	1239 (default) ...
65072:XXX	1239 1239 ...
65073:XXX	1239 1239 1239 ...
65074:XXX	1239 1239 1239 1239 ...
String	Resulting AS Path to ASXXX in Europe
65050:XXX	Do not advertise to ASXXX
65051:XXX	1239 (default) ...
65052:XXX	1239 1239 ...
65053:XXX	1239 1239 1239 ...
65054:XXX	1239 1239 1239 1239 ...
String	Resulting AS Path to ASXXX in North America
65010:XXX	Do not advertise to ASXXX
65011:XXX	1239 (default) ...
65012:XXX	1239 1239 ...
65013:XXX	1239 1239 1239 ...
65014:XXX	1239 1239 1239 1239 ...
String	Resulting AS Path to all supported ASes
65000:0	Do not advertise
65001:0	1239 (default) ...
65002:0	1239 1239 ...
65003:0	1239 1239 1239 ...
65004:0	1239 1239 1239 1239 ...

**More info at**  
**[www.sprintlink.net/policy/bgp.html](http://www.sprintlink.net/policy/bgp.html)**

# Some ISP Examples

## AAPT

```
aut-num:      AS2764
as-name:      ASN-CONNECT-NET
descr:        AAPT Limited
admin-c:      CNO2-AP
tech-c:       CNO2-AP
remarks:      Community support definitions
remarks:
remarks:      Community Definition
remarks:      -----
remarks:      2764:2 Don't announce outside local POP
remarks:      2764:4 Lower local preference by 15
remarks:      2764:5 Lower local preference by 5
remarks:      2764:6 Announce to customers and all peers
                (incl int'l peers), but not transit
remarks:      2764:7 Announce to customers only
remarks:      2764:14 Announce to AANX
notify:       routing@connect.com.au
mnt-by:       CONNECT-AU
changed:      nobody@connect.com.au 20050225
source:       CCAIR
```

More at <http://info.connect.com.au/docs/routing/general/multi-faq.shtml#q13>



# Some ISP Examples

## MCI Europe

```
aut-num: AS702
descr: MCI EMEA - Commercial IP service provider in Europe
remarks: MCI uses the following communities with its customers:
        702:80      Set Local Pref 80 within AS702
        702:120     Set Local Pref 120 within AS702
        702:20      Announce only to MCI AS'es and MCI customers
        702:30      Keep within Europe, don't announce to other MCI AS's
        702:1       Prepend AS702 once at edges of MCI to Peers
        702:2       Prepend AS702 twice at edges of MCI to Peers
        702:3       Prepend AS702 thrice at edges of MCI to Peers
        Advanced communities for customers
        702:7020     Do not announce to AS702 peers with a scope of
                    National but advertise to Global Peers, European
                    Peers and MCI customers.
        702:7001     Prepend AS702 once at edges of MCI to AS702
                    peers with a scope of National.
<snip>
        Additional details of the MCI communities are located at:
        http://global.mci.com/uk/customer/bgp/
mnt-by: WCOM-EMEA-RICE-MNT
changed: rice@lists.mci.com 20041006
source: RIPE
```




**And several  
more!**

# Some ISP Examples

## BT Ignite

```
aut-num:      AS5400
descr:        BT Ignite European Backbone
remarks:
remarks:      Community to
remarks:      Not announce      To peer:      Community to
remarks:                                             AS prepend 5400
remarks:      5400:1000 All peers & Transits      5400:2000
remarks:
remarks:      5400:1500 All Transits      5400:2500
remarks:      5400:1501 Sprint Transit (AS1239)      5400:2501
remarks:      5400:1502 SAVVIS Transit (AS3561)      5400:2502
remarks:      5400:1503 Level 3 Transit (AS3356)      5400:2503
remarks:      5400:1504 AT&T Transit (AS7018)      5400:2504
remarks:      5400:1505 UUnet Transit (AS701)      5400:2505
remarks:
remarks:      5400:1001 Nexica (AS24592)      5400:2001
remarks:      5400:1002 Fujitsu (AS3324)      5400:2002
remarks:      5400:1003 Unisource (AS3300)      5400:2003
<snip>
notify:       notify@eu.bt.net
mnt-by:       CIP-MNT
source:       RIPE
```




**And many  
many more!**

# Some ISP Examples

## Carrier1

```
aut-num:      AS8918
descr:        Carrier1 Autonomous System
<snip>
remarks:      Community   Definition
remarks:      *
remarks:      8918:2000    Do not announce to C1 customers
remarks:      8918:2010    Do not announce to C1 peers, peers+ and transit
remarks:      8918:2015    Do not announce to C1 transit providers
remarks:      *
remarks:      8918:2020    Do not announce to Teleglobe (AS 6453)
remarks:      8918:2035    Do not announce to UUNet      (AS 702)
remarks:      8918:2040    Do not announce to Cogent      (AS 174)
remarks:      8918:2050    Do not announce to T-Systems   (AS 3320)
remarks:      8918:2060    Do not announce to Sprint      (AS 1239)
remarks:      *
remarks:      8918:2070    Do not announce to AMS-IX peers
remarks:      8918:2080    Do not announce to NL-IX peers
remarks:      8918:2090    Do not announce to Packet Exchange Peers
<snip>
notify:       inoc@carrier1.net
mnt-by:       CARRIER1-MNT
source:       RIPE
```




And many  
many more!

# Some ISP Examples

## Level 3

```
aut-num:      AS3356
descr:        Level 3 Communications
<snip>
remarks:      -----
remarks:      customer traffic engineering communities - Suppression
remarks:      -----
remarks:      64960:XXX - announce to AS XXX if 65000:0
remarks:      65000:0   - announce to customers but not to peers
remarks:      65000:XXX - do not announce at peerings to AS XXX
remarks:      -----
remarks:      customer traffic engineering communities - Prepending
remarks:      -----
remarks:      65001:0    - prepend once   to all peers
remarks:      65001:XXX - prepend once   at peerings to AS XXX
remarks:      65002:0    - prepend twice  to all peers
remarks:      65002:XXX - prepend twice  at peerings to AS XXX
remarks:      65003:0    - prepend 3x     to all peers
remarks:      65003:XXX - prepend 3x      at peerings to AS XXX
remarks:      65004:0    - prepend 4x     to all peers
remarks:      65004:XXX - prepend 4x      at peerings to AS XXX
<snip>
mnt-by:        LEVEL3-MNT
source:        RIPE
```



And many  
many more!

# Creating your own community policy

- **Consider creating communities to give policy control to customers**

**Reduces technical support burden**

**Reduces the amount of router reconfiguration, and the chance of mistakes**

**Use the previous examples as a guideline**



# Summary

# Summary

- **Multihoming is not hard, really...**

*Keep It Simple & Stupid!*

- **Full routing table is *rarely* required**

**A default is often just as good**

**If customers want 190k prefixes, charge them money for it**



# BGP Multihoming Techniques

**The End! 😊**